

POWERTEC®

6-1/2" Router Plate/Centering Pin/Cone



WARNING

To reduce the risk of injury, turn Router off and disconnect it from power source before installing and removing accessories. An accidental start-up can cause injury.

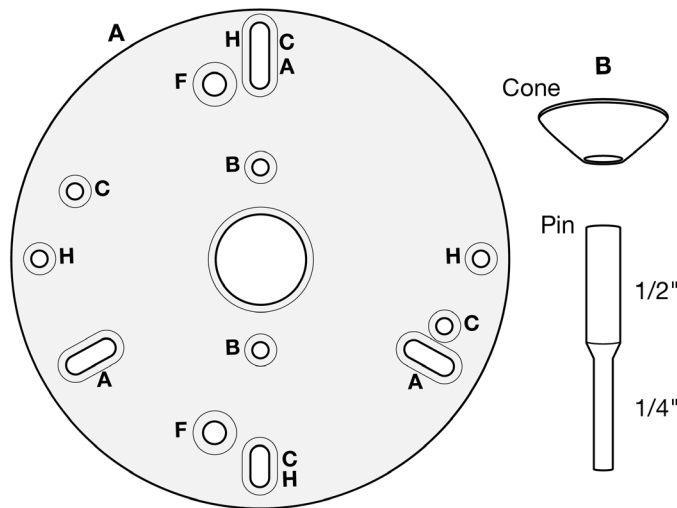
WARNING

For your own safety, read and follow all safety procedures listed in the Router instruction manual.

PACKAGING CONTENTS

ITEM	DESCRIPTION	QTY
A	Router Plate	1
B	Centering Pin (1/2" & 1/4") with Cone	1
C	Fastener Package containing machine screws of different sizes (choose the correct screws to be used on Router)	1 pkg.

Figure 1



Tools Needed

- PORTER-CABLE Style Guide Bushing (sold separately)
- Phillips Head Screwdriver

Intended Use

The centering pin and cone are used to precisely center the Router Plate guide with the Router collet prior to inserting a Router bit.

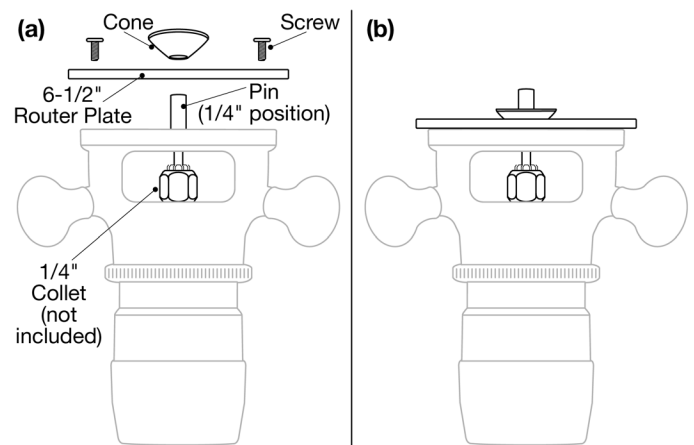
ASSEMBLY

- Remove existing Router Plate and all related hardware from the Router.
- From Fastener Package locate machine screws for Router Plate.
- See Figure 1. Find the corresponding letters for Router by using the chart on the back of this instruction sheet.

NOTE: Some Routers have more than one option.

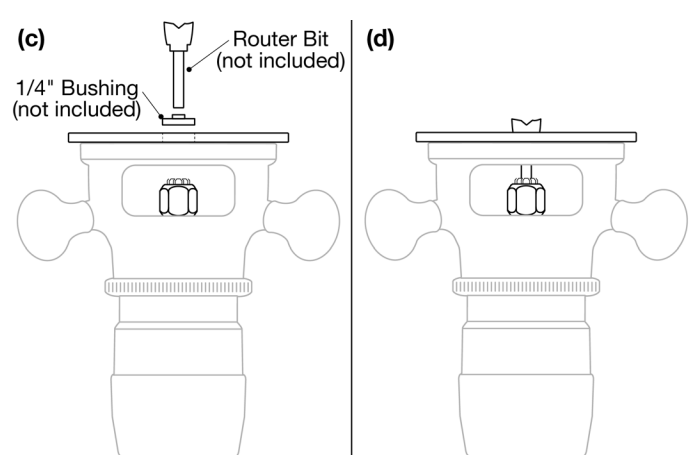
- See Figure 2, a-b. Place the universal Router Plate onto the Router and line up the first letter with the appropriate hole, then rotate the Plate until all holes for the pattern line up. Install the machine screws. **DO NOT** tighten.
- The Centering Pin and Cone can be used with either a 1/4" or 1/2" collet (not included). Take apart and reposition the Cone on the Centering Pin to fit the appropriate collet.
- Insert the Centering Pin/Cone assembly into the collet until light resistance is noticeable (about 1/16"-1/8" from bottom of collet). Tighten the collet.
- Push on the Cone until it makes contact with the Router Plate. Center the Cone in the guide bushing hole then tighten the machine screws on the Router Plate.

Figure 2, a-b (Shown with 1/4" collet)



- See Figure 3, c-d.
- **Remove Centering Pin/Cone and store for future use.**
- Insert appropriate bushing (not included) into Router Plate.
- Insert Router Bit into collet. Tighten if needed.
- Router is now ready for use.

Figure 3, c-d



NOTE: If the machine screws (supplied) bottom out into the Router mounting holes, shorten screws to match the Router.

Use Chart Below to Match Model and Corresponding Letters to Known Routers

NOTE: Drill holes and counterbores or countersinks to accommodate the mounting screws supplied with the Router. For Routers equipped with a built-in lift system, use the Router sub-base as a guide for the location and size of the access hole and as a drilling guide.

PORTER-CABLE*	A	690 Series		A	8529 / 7529	
	H	7518 / 7519 / 7538 / 7539				
DEWALT*	F	DW621		A	DW616 Series	
	F	DW625		A	DW618 Series	
Craftsman*	C	315 275 000		A	315 175 060	
	A	315 175 040		A	315 175 070	
	A	315 175 050				
Bosch*	A	1617 (fixed base)		A	1618	
	A	1617 (plunge base)		A	MR23 Series	
Makita*	A	RF1101				
Ryobi*	C	R1631K				
Milwaukee*	A	5615	A	5616	A	5619
	H	5625-20				
Fein*	F	FT 1800				
Elu*	F	177				
Hitachi*	A	M-12VC	B	M8V	B	TR12
Triton*	H	TRA001		H	MOF001	

*PORTER-CABLE, DEWALT, Craftsman and Elu are trademarks of The Stanley Black & Decker Corporation—Bosch is a trademark of the Robert Bosch Tool Corporation—Makita is a trademark of Makita Corporation—Ryobi is a trademark of Ryobi Limited and is used by Techtronic Industries Company LTD—Milwaukee is a trademark of Techtronic Industries Company LTD—Fein is manufactured by C. & E. Fein GmbH—Hitachi is a trademark of Hitachi, Ltd—Triton is a trademark of Power Box AG Corporation Switzerland

MAINTENANCE

Carnauba wax may be applied to the universal Router Plate for ease of use and scratch reduction. If scratching does occur, carefully polish with plastic polish until scratches are removed.

Visit us on the web at www.powertecproducts.com



Put these instructions and the original sales invoice in a safe, dry place for future reference.

Southern Technologies, LLC • Chicago, IL 60606