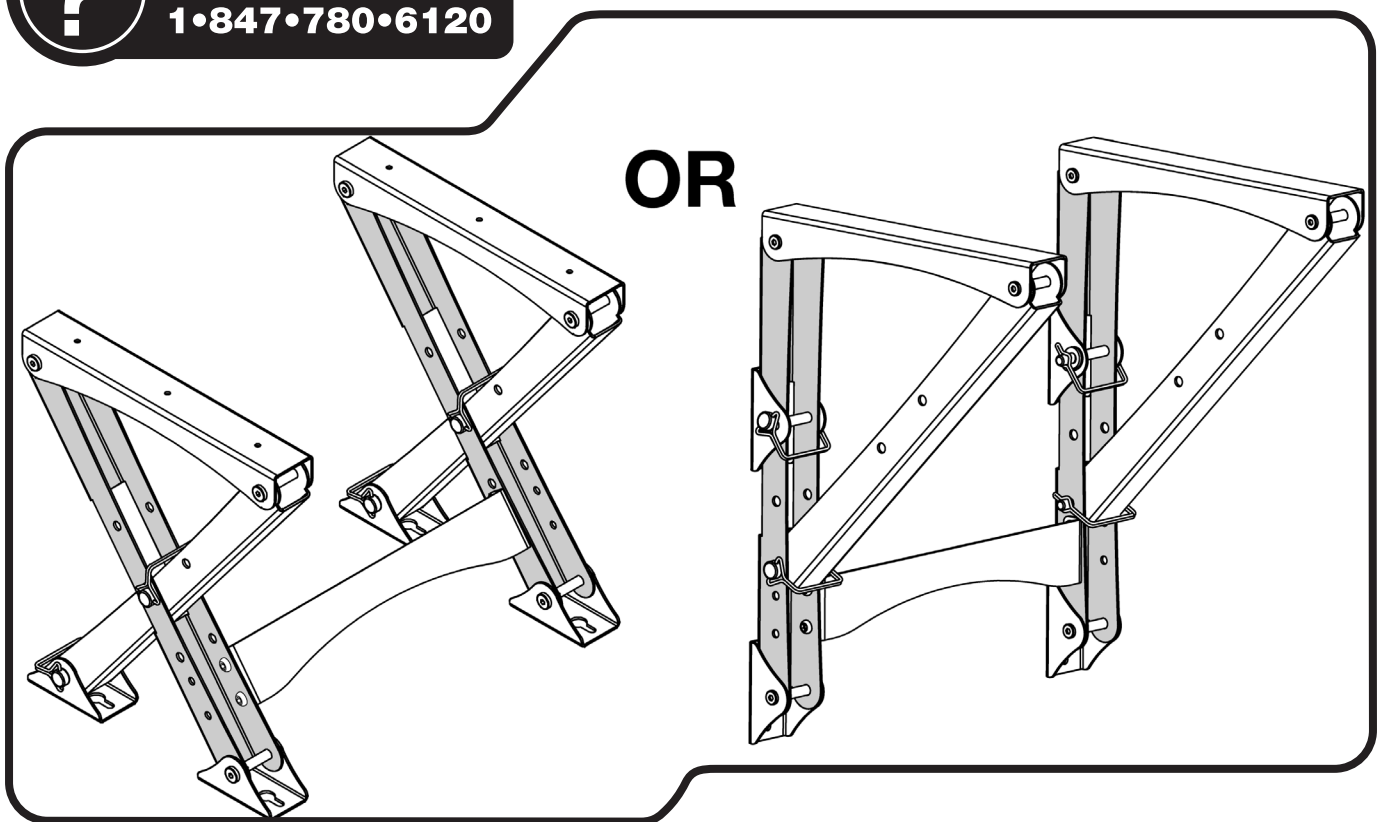


Owner's Manual

POWERTEC®

Convertible Folding Steel Stand for Trim Router Tables



Visit us on the web at www.powertecproducts.com



You will need this manual for safety instructions, operating procedures, and warranty.
Put it and the original sales invoice in a safe, dry place for future reference.

TABLE OF CONTENTS

SECTION

PAGE



SAFETY RULES / WARNINGS

3



CONTENTS AND ASSEMBLY

4-5



OPERATION

6-7



MAINTENANCE

7



WARRANTY

8

PRODUCT SPECIFICATIONS

Wall Mounting Folded Dimensions: . . . 15.18" x 4.2" x 25.2"

Low Position—Open Dimensions . . . 15.18" x 17.85" x 8.9"

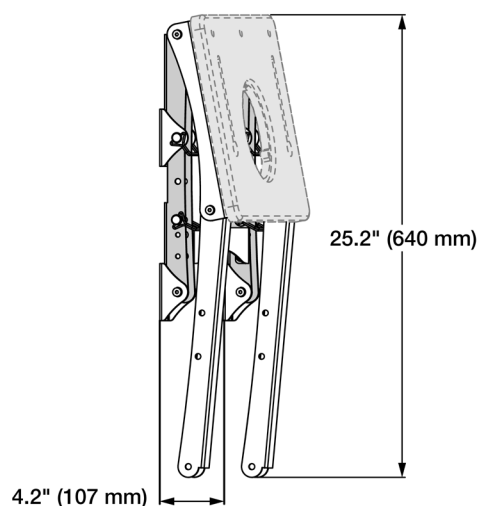
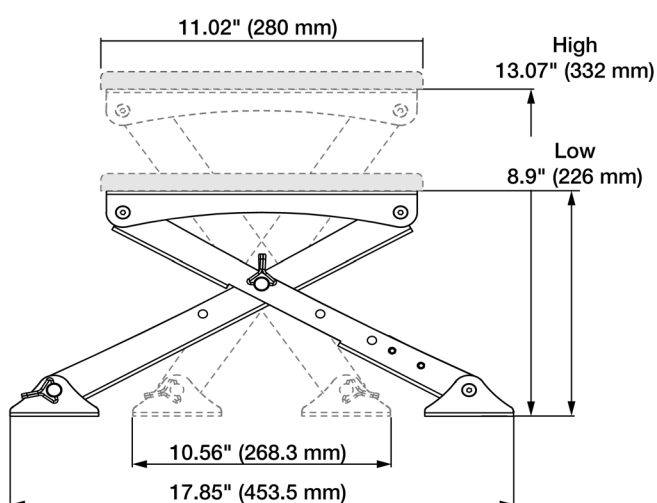
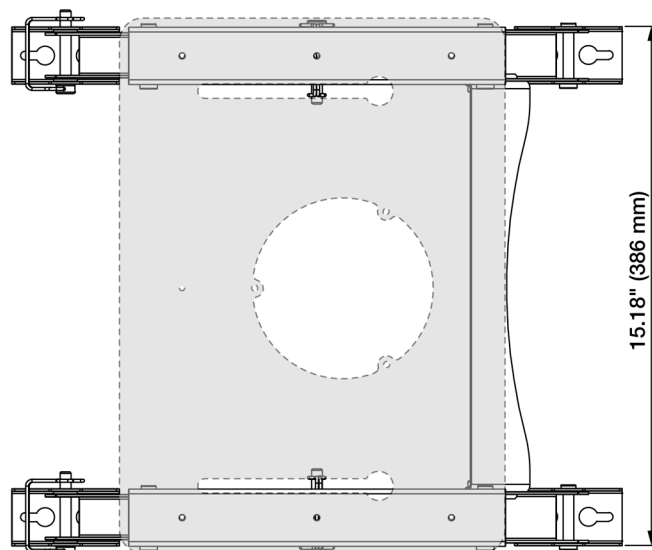
Low Position—Working Height (w/o tabletop) 8.9"

High Position—Open Dimensions . 15.18" x 10.56" x 13.07"

High Position—Working Height (w/o tabletop) 13.07"

Maximum Weight Limit: 40 lb

Dimensions



⚠ WARNING

For your own safety, read all of the rules and precautions before operating tool.

⚠ WARNING

This product was designed to be used as a Convertible Folding Stand. Do not overload. The maximum capacity for the Convertible Folding Stand is **40 lb (18.14 kg)**.

- Do not use for scaffolding or as ladder. Do not stand or climb on the Convertible Folding Stand; it could tip over, causing serious injury.
- Do not apply an unbalanced load. This could cause the Convertible Folding Stand to tip over.
- Store the Convertible Folding Stand properly. Do not store the Convertible Folding Stand outdoor or in a damp location.
- Keep the work area clean, uncluttered, and well lit. Do not work on or place the Convertible Folding Stand legs on floor surfaces that are slippery from sawdust, oil, water or wax.
- Keep children and bystanders away while operating a power tool. Distractions may cause you to lose control. Visitors should wear the same safety equipment as the operator.
- For any product used on this Convertible Folding Stand — Follow the manufacturer's mounting instructions carefully. Fasten the tool to the MDF top securely as instructed by manufacturer.
- Place the Convertible Folding Stand on a flat level surface to prevent rocking or tipping.
- Make sure the Convertible Folding Stand is firmly on the floor before use.
- Always wear safety glasses or eye shields when operating power tools.
- Dress properly. Do not wear loose clothing or jewelry. Keep your hair, clothing and gloves away from moving parts. Loose clothes, jewelry or long hair can be caught in moving parts. Always wear non-slip footwear. Tie back long hair. Roll long sleeves above the elbow.
- Always use clamps or other practical ways to support the workpiece and secure it to a stable platform. Holding the workpiece by hand or against your body is unstable and may lead to loss of control.
- Check all hardware prior to mounting any bench top tools.
- Inspect all hardware periodically; tighten anything loose.
- Be sure to use the proper mounting bolts for the unit being attached to the Convertible Folding Stand.

⚠ WARNING

Always follow proper operating procedures as defined in this manual even if you are familiar with use of this Convertible Folding Stand or any tool used with this Convertible Folding Stand. Remember that being careless for even a fraction of a second can result in severe personal injury.

You must be familiar with the use of any tool or accessory used with this Convertible Folding Stand. The supplier cannot be held responsible for any accident, injury or damage incurred while using this Convertible Folding Stand with any tool.

⚠ WARNING

Do not modify this Convertible Folding Stand and/or use it for any application other than that for which it was designed.

FOLLOW ALL STANDARD SHOP SAFETY PRECAUTIONS, INCLUDING:

- Keep children and visitors at a safe distance from work area.
- Keep work area clean. Cluttered work areas invite accidents. Work area should be properly lit.
- Do not use power tools in dangerous environments. Do not use power tools in damp or wet locations. Do not expose power tools to rain.
- Wear proper apparel. Do not wear loose clothing, gloves, neckties, rings, bracelets or other jewelry which may get caught in moving parts of the tool.
- Wear protective hair covering to contain long hair.
- Wear safety shoes with non-slip soles.
- Wear safety glasses complying with United States ANSI Z87.1. Everyday glasses have only impact resistant lenses. They are NOT safety glasses.
- Wear face mask or dust mask if operation is dusty.
- Be alert and think clearly. Never operate power tools when tired, intoxicated or when taking medications that cause drowsiness.
- A guard or any other part that is damaged should be properly repaired or replaced. Do not perform makeshift repairs.
- Use the right tool for your job. Do not force your tool to do a job for which it was not designed.
- Use safety equipment such as featherboards, push sticks and push blocks, etc., when appropriate.
- Maintain proper footing at all times and do not overreach.
- Do not use this Convertible Folding Stand as a step or seat.

⚠ WARNING

To avoid serious injury, turn off and unplug any equipment before attaching or changing accessories or adjusting the cutter height position.

⚠ CAUTION

Think safety! Safety is a combination of operator common sense and alertness at all times when tools are being used.

⚠ WARNING

Do not use the Convertible Folding Stand until it is completely assembled and you have read and understood this entire operating manual and the operating manual of the tool being used with this Convertible Folding Stand.

SAVE ALL WARNINGS AND INSTRUCTIONS FOR FUTURE REFERENCE



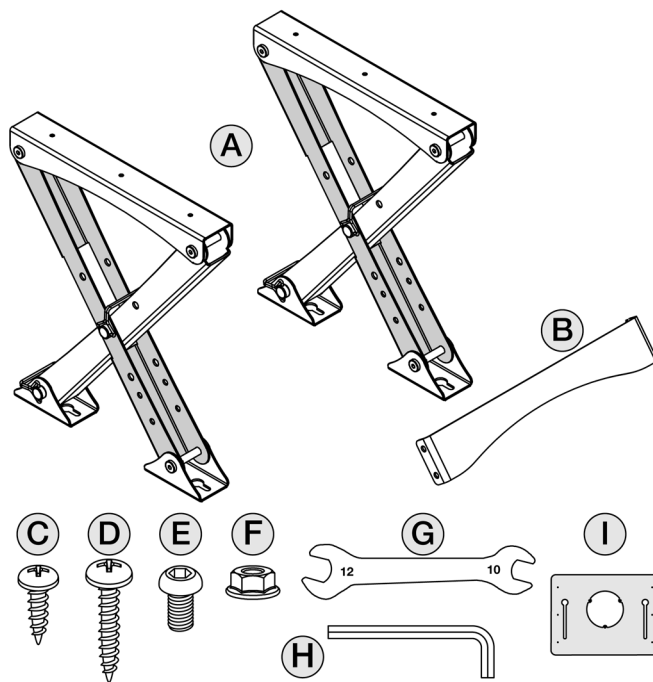
CONTENTS

UNPACKING

- The Convertible Folding Stand is shipped complete in one carton. Contact the customer service center if any parts are missing.
- Examine shipping carton for freight damage before opening. If shipping carton is damaged file a claim with the carrier immediately.
- Carefully unpack all loose items from shipping carton and make sure all parts are accounted for.

ITEM	DESCRIPTION	QTY
A	Leg Assembly	2
B	Crossbar	1
C	5/32" x 5/8" Wood Screw	6
D	1/4" x 1" Wood Screw	8
E	M6 x 12 mm Socket Round Head Bolt	4
F	M6 Flange Nut	4
G	Open Wrench 12 mm/10 mm	1
H	4mm Hex Wrench	1
I	Drill Guide (Paper Template)	1

Figure 1



ASSEMBLY

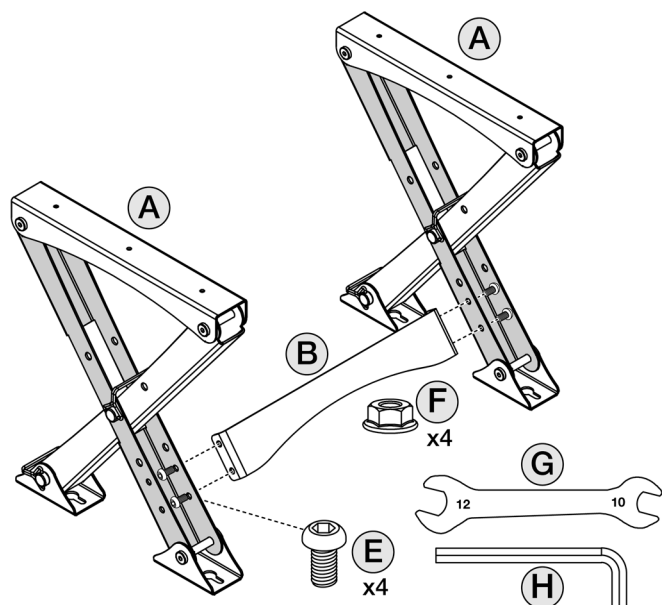
ASSEMBLY

NOTE: For the purpose of clarity, Rear Legs shown as grey throughout instructions.

Attach Crossbar:

1. Set Leg Assemblies (A) upright and apart approximately the width of Crossbar (B).
2. With Crossbar flange facing in, locate and align Crossbar with two bottom holes on inner side of each Rear Leg.
3. Insert M6 x 12 mm Socket Round Head Bolt (E) into each hole and hand-twist on M6 Flange Nut (F).
4. Tighten Bolts with Nuts using 4 mm Hex Wrench (H) and Open Wrench 12 mm/10 mm (G).

Figure 2



Adjust Stand Height

The leg assembly is preset at Higher Stand position.

Adjust Stand to Lower Position:

L : Hole for Lower Stand position
H : Hole for Higher Stand position
W : Hole for wall mounting

- Pull loop of D-Latch off pin to unlatch. Remove both D-Latches from legs.
- Align "L" hole in Front Leg to "L" hole in Rear Leg. Insert pin of D-Latch through "L" holes, across Front and Rear legs.
- Replace the loop and secure D-Latch in closed position.
- Repeat on the other leg assembly.

Figure 3

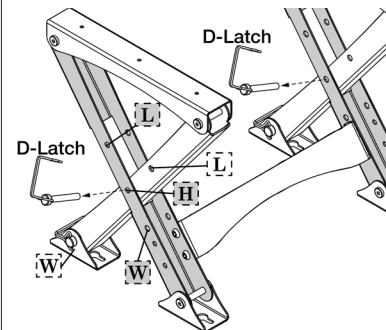
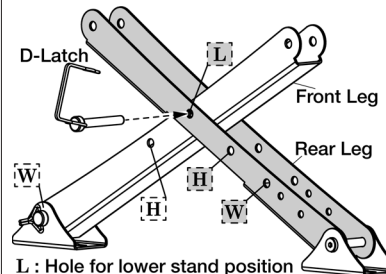


Figure 4



WARNING



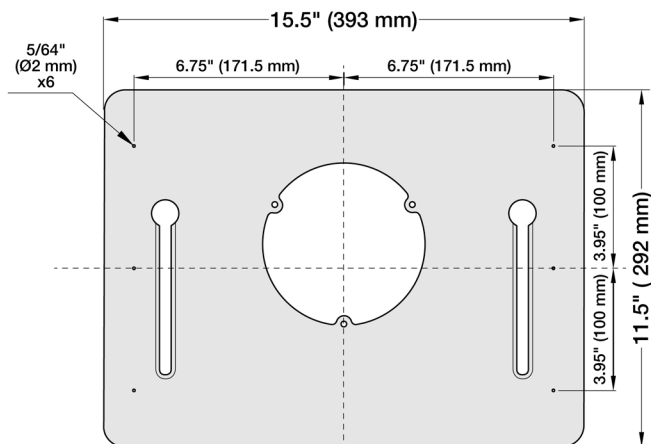
Risk of personal injury. When a trim router table is mounted on the Folding Stand, clear the table before adjusting the Stand height. Table could tip over or finger/hand crushing could occur resulting in personal injury.

Tabletop Installation:

The **POWERTEC UT1013 Convertible Folding Stand** includes a Drill Guide (1) for preparing the tabletop.

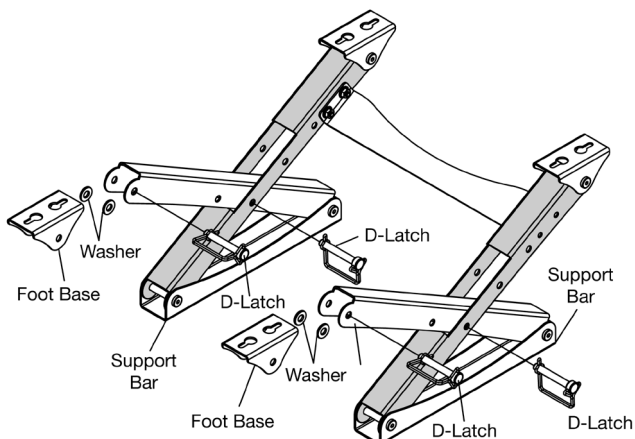
Note: The Stand is designed to work with **POWERTEC 71392, Trim Router Table, or other 11-1/2" x 15-1/2" trim router tables – not included.**

Figure 5



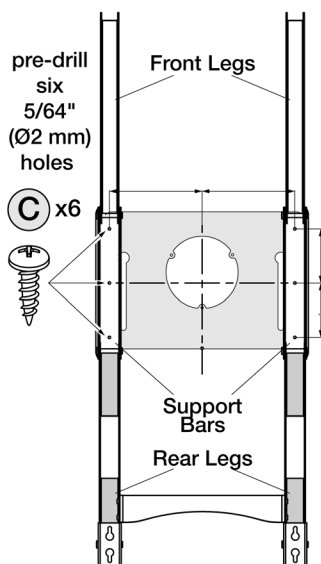
- See Figure 6. Turn the Stand upside down.
- Pull the loop of D-Latch off the pin to unlatch. Remove four D-Latches from Left/Right Leg assembly.
- Keep all D-Latches, 4 Washers and 2 Foot Bases.

Figure 6



- From underside, drill six 5/64" (Ø2 mm) pilot holes in Tabletop according to Drill Guide instructions.
- Lay flat Front and Rear Legs. Place onto underside of Tabletop.
- Align holes in Support Bars to the six pilot holes.
- Insert six 5/32" x 5/8" Wood Screws (C) through holes in the Support Bars.
- Secure Stand to Tabletop with the Wood Screws. Hand tighten to avoid stripping holes.
- Choose desired height and secure with D-Latches on Left/Right Leg Assemblies (See Page 4 Adjust Stand Height).

Figure 7



Reinstall Foot Base to Legs:

- See Fig 8. Place one washer on the front leg and another washer inside the foot base. Properly align the holes of foot base, front leg, and washers.
- Insert the pin of D-Latch through the holes of foot base, front leg, and washers.
- Replace the loop and secure D-Latch in closed position.
- Repeat on the other front leg.

Figure 8

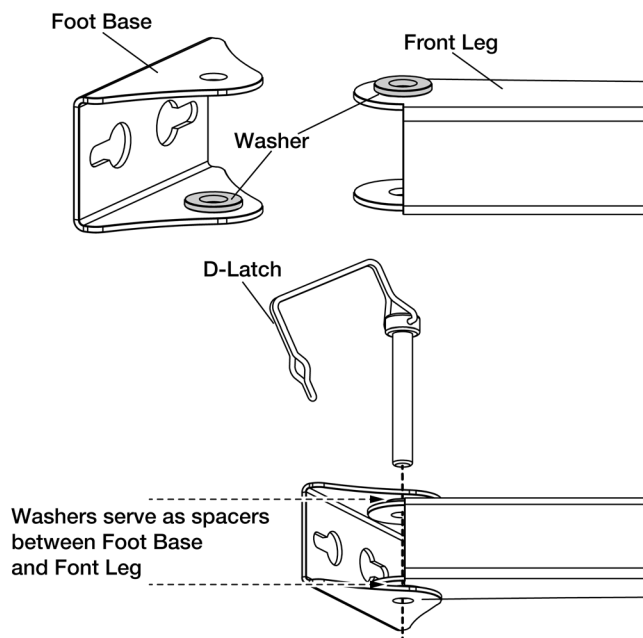
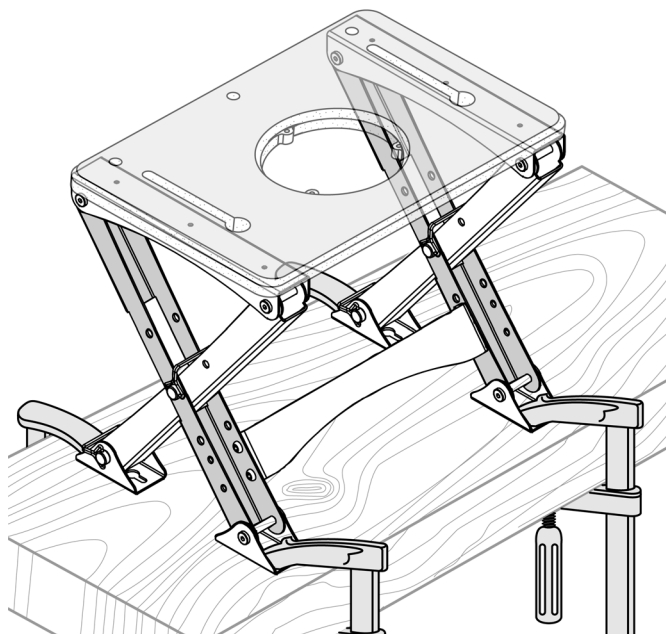


Figure 9



WARNING

Risk of personal injury. Stand may tip over if not secured. Before operation, secure Convertible Folding Stand to workbench with clamps on four Foot Bases (as shown) or permanently mounted to the workbench.

Do not sit or stand on table or allow children to climb or play on table.

Ensure table feet are positioned flat. Never use on sloped or uneven surface.

Stand Maximum weight capacity: 40 lbs. (Including top)

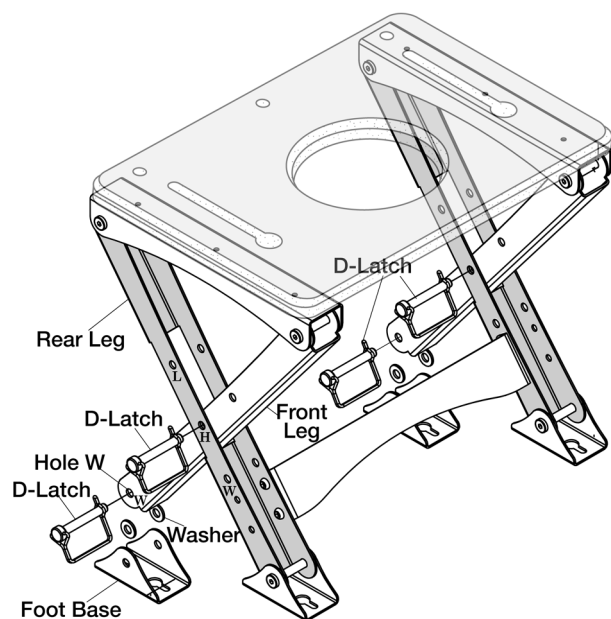


OPERATION

Convert to Wall Mounting:

- Pull loop of D-Latch off pin to unlatch. Remove four D-Latches from Left/Right Leg assembly.
- Keep all D-Latches, Washers and Foot Bases.

Figure 10



- See Fig 11. Align "W" hole in Front Leg to "W" hole in Rear Leg. Insert the pin of D-Latch through the "W" holes, across Front and Rear legs.
- Replace the loop and secure D-Latch in closed position.
- Repeat on the other side.
- Attach Foot Base to Rear Leg on hole "L".
- Insert the pin of D-Latch across Foot Base and Rear Leg.
- Place two Washers onto each pin (stored for future use), then replace the loop to secure D-Latch in closed position.
- Repeat on the other leg.

Figure 11

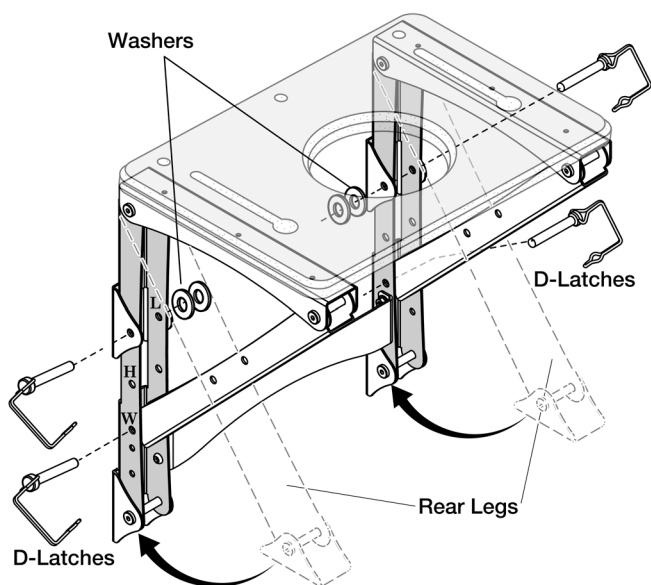
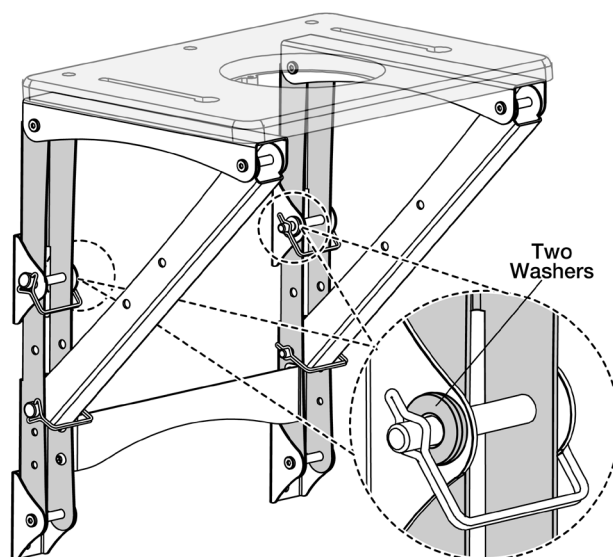


Figure 12

Setup Ready for Wall Mounting



Wall Mounting:



To avoid serious injury and property damage, the Convertible Folding Stand **MUST** be mounted securely to wooden stretchers spanning wall studs at all four mounting locations. Do NOT rely on wall anchors.

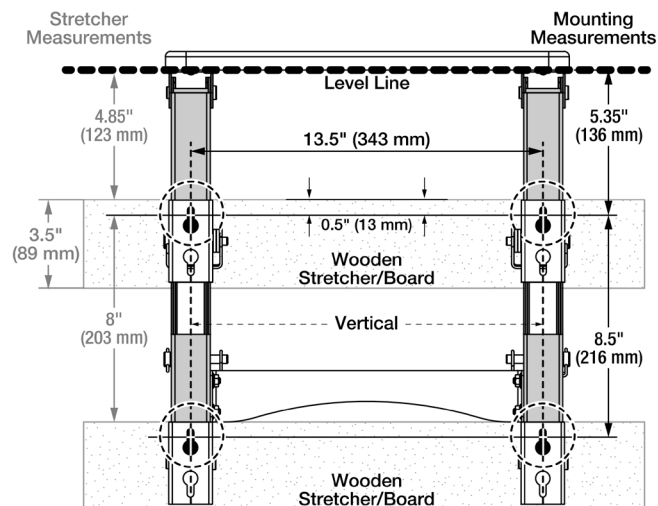
Note: Stretcher should span the standard 16" stud spacing. Minimum width is 3.5" (standard 2x4).

See Figure 13

- Choose a comfortable working height and draw a Level Line. From drawn line, measure down 4.85" (123 mm) and secure first 2x4 board spanning studs, parallel to Level Line.
- From top edge of board, measure down 0.5" (13 mm) and make two cross marks spaced 13.5" apart.
- From center of two cross marks on the first stretcher, measure down 8" (203 mm). Place second 2x4 board parallel to the first and fasten the second stretcher.
- From cross marks on top stretcher, measure down 8.5" (216 mm) and draw two cross marks spaced 13.5" apart in the bottom stretcher.

Note: Make sure intersections of the cross marks are precisely vertical; otherwise, the tabletop will be slanted.

Figure 13 Example Shown Using 2x4 Boards

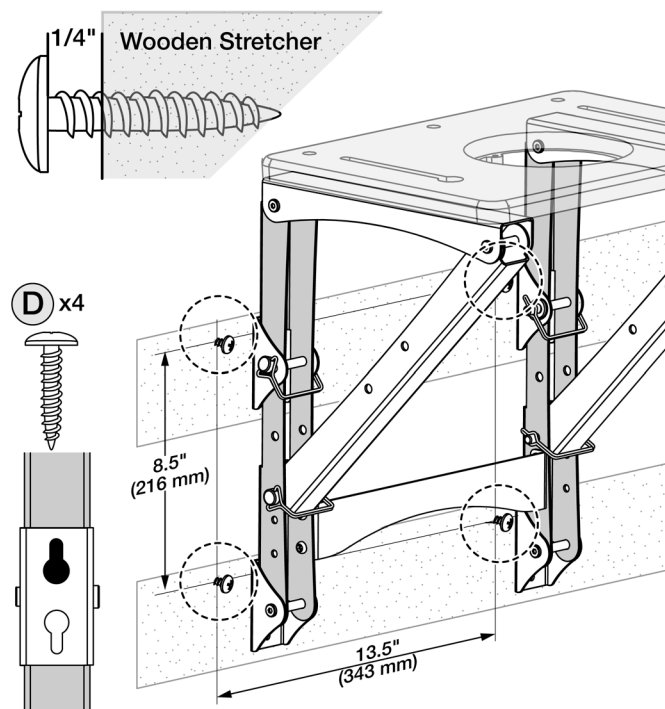


Wall Mounting (continued):

See Figure 14

- Drill pilot holes and place 1/4" x 1" Wood Screws (D) in all four cross marks.
- Do not drive the screws all the way in. For the keyhole to work, leave a space of about 1/4".

Figure 14

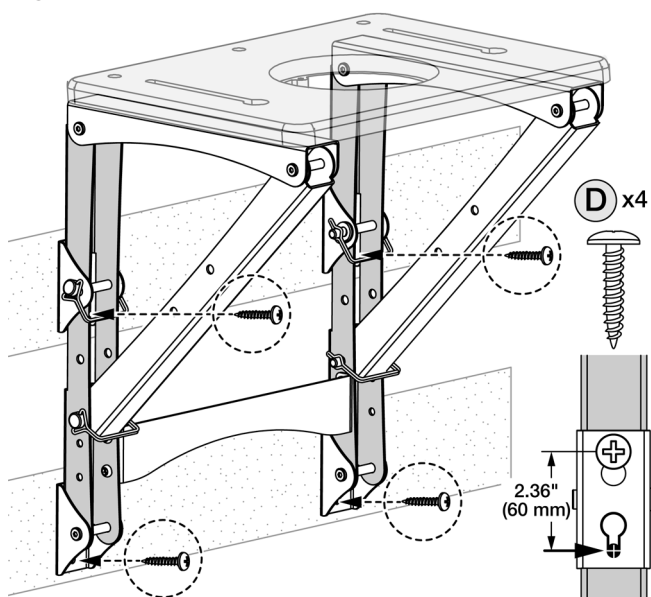


See Figure 15

- Place the upper large keyholes over the screws and push down, seating the table firmly and evenly on the screws.
- To safely lock the Table, screw four 1/4" x 1" Wood Screws (D) in the narrow portion of the 4 exposed keyhole slots.

Note: The two upper Wood Screws need to be hand driven.

Figure 15



Folding the Stand When Wall-mounted:

⚠ WARNING

Pinch Hazard. To avoid pinching or crushing fingers, Keep hands away from areas where legs cross.

See Figure 16

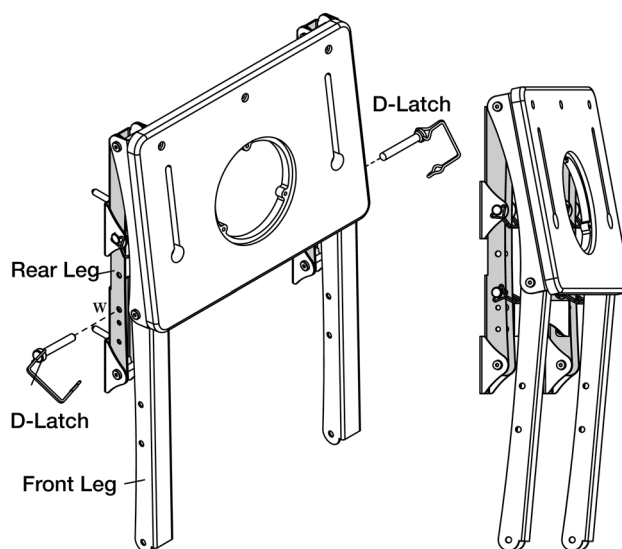
- Pull loop of lower D-Latch off pin and unlatch.
- While supporting the table top, remove the two lower D-Latches from the legs.
- Carefully lower Front Legs with table top to fold the stand.

Note: Store removed 2 D-Latches in a safe place for future use. For easy access, after folding the table, replace these 2 D-Latches through the "W" holes in Rear Legs.

⚠ CAUTION

Never store with equipment mounted to the Stand.

Figure 16



MAINTENANCE



7

⚠ WARNING

When servicing, use only identical replacement parts. Use of any other parts may create a hazard or cause product damage. To ensure safety and reliability, all repairs should be performed by a qualified service technician.

⚠ WARNING

Keep the Convertible Folding Stand dry, clean, and free from oil and grease. Always use a clean cloth when cleaning. Never use brake fluids, gasoline, petroleum-based products or any strong solvent to clean the Convertible Folding Stand. Chemicals can damage, weaken or destroy plastic which may result in serious personal injury.



7

Thank you for investing in a **POWERTEC**® power tool. This product has been designed and manufactured to meet high quality standards and is guaranteed for domestic use against defects in workmanship or material for a period of 12 months from the date of purchase. This guarantee does not affect your statutory rights.

SOUTHERN TECHNOLOGIES LLC. BENCH TOP AND STATIONARY POWER TOOL

LIMITED 1 YEAR WARRANTY AND 30-DAY SATISFACTION GUARANTEE POLICY

POWERTEC products are designed and manufactured by **Southern Technologies LLC**. All warranty communications should be directed to **Southern Technologies LLC** by calling 847-780-6120 (toll free), 9 AM to 5 PM, Monday through Friday, US Pacific Time.

30- DAY SATISFACTION GUARANTEE POLICY

During the first 30 days after the date of purchase, if you are dissatisfied with the performance of this **POWERTEC** tool for any reason, you may return the tool to the retailer from which it was purchased for a full refund or exchange. You must present proof of purchase and return all original equipment packaged with the original product. The replacement tool will be covered by the limited warranty for the balance of the one year warranty period.

LIMITED ONE YEAR WARRANTY

This warranty covers all defects in workmanship or materials in this **POWERTEC** tool for a one year period from the date of purchase. This warranty is specific to this tool. **Southern Technologies, LLC** reserves the right to repair or replace the defective tool, at its discretion.

HOW TO OBTAIN SERVICE

To obtain service for this **POWERTEC** tool you must return it, freight prepaid, to **POWERTEC**. You may call (toll free) 847-780-6120 for more information. When requesting warranty service, you must present the proof of purchase documentation, which includes a date of purchase. **POWERTEC** will either repair or replace any defective part, at our option at no charge to you. The repaired or replacement unit will be covered by the same limited warranty for the balance of one year warranty period.

WHAT IS NOT COVERED

This warranty applies to the original purchaser at retailer and may not be transferred.

This warranty does not cover consumable items such as saw blades, knives, belts, discs, cooling blocks, and sleeves. This warranty does not cover required service and part replacement resulting from normal wear and tear, including accessory wear.

This warranty does not cover any malfunction, failure or defect resulting from:

- 1) Misuse, abuse, neglect and mishandling not in accordance with the owner's manual.
- 2) Damage due to accidents, natural disasters, power outage, or power overload.
- 3) Commercial or rental use.
- 4) Alteration, modification or repair performed by persons not recommended by **POWERTEC**.

DISCLAIMER

To the extent permitted by applicable law, all implied warranties, including warranties of MERCHANTABILITY or FITNESS FOR A PARTICULAR PURPOSE, are disclaimed. Any implied warranties, that cannot be disclaimed under state law are limited to one year from the date of purchase. **Southern Technologies LLC** is not responsible for direct, indirect, incidental or consequential damages. Some states do not allow limitations on how long an implied warranty lasts and/or do not allow the exclusion or limitation of incidental or consequential damages, so the above limitations may not apply to you. This warranty gives you specific legal rights, and you may also have other rights which vary from state to state. Southern Technologies LLC., makes no warranties, representations, or promises as to the quality or performance of its power tools other than those specifically stated in this warranty.

POWERTEC®

Southern Technologies LLC • Chicago • IL 60606