



IMPORTANT

Due to a manufacturing change the Owner's Manual provided with your tool DOES NOT cover all of the assembly. USE this sheet along with the provided Owner's Manual to assemble this tool.

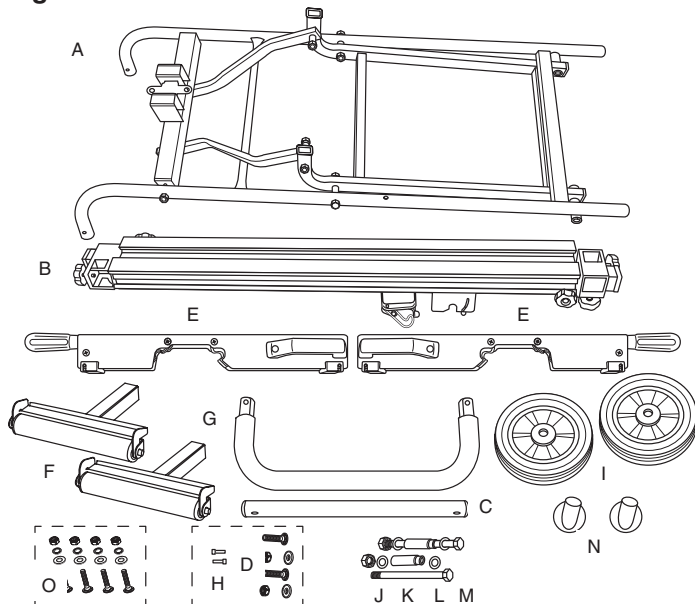
UNPACKING

Refer to Figure 1 on this sheet

Check for shipping damage. Check immediately that all parts and accessories are included.

ITEM	DESCRIPTION	QTY
A	Main Frame	1
B	Top Frame	1
C	Cross Bar	1
D	Cross Bar Hardware (M6 bolt, washer, nut)	2
E	Quick Release Mounting Brackets	2
F	Roller Bars	2
G	Handle	1
H	Screw (handle)	2
I	Wheels	2
J	Bolts (wheel)	2
K	Washers (wheel)	4
L	Axle sleeves (wheel)	2
M	Lock nuts (wheel)	2
N	Feet	2
O	Miter Saw Mounting Hardware (mounting bolt, washer, lock washers and nut)	4

Figure 1



TOOLS NEEDED

The following tools (not included) are needed to assemble the miter saw stand:

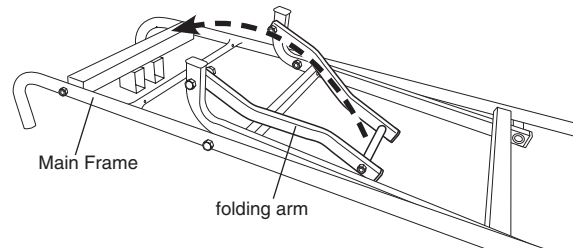
- 1 - 4 mm hex wrench (Frame assembly)
- 1 - 10 mm open end wrench (Frame assembly)
- 1 - 13 mm socket (Frame assembly)
- 1 - Phillips screw driver (handle assembly)
- 2 - Adjustable wrenches or two 19 mm wrenches (wheel assembly)

ASSEMBLE FRAME

Refer to Figure 2-6

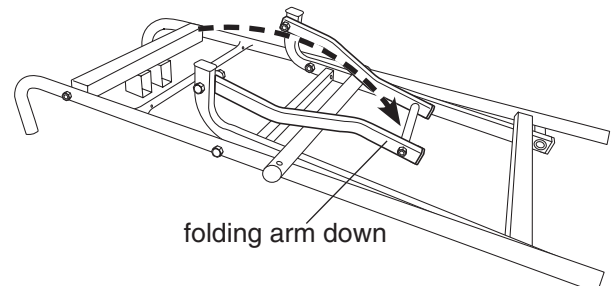
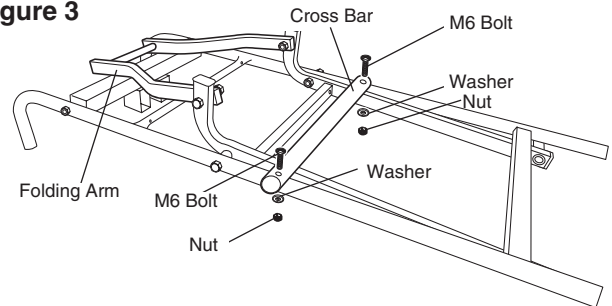
- Place the main frame as shown in Figure 2. Rotate the folding arm up.

Figure 2



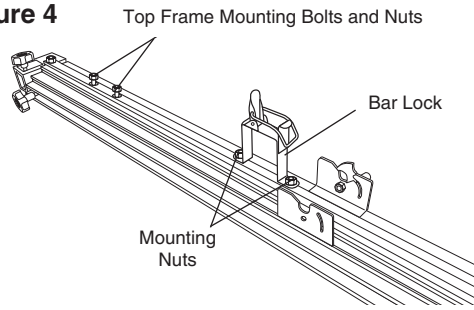
- Use the M6 bolts, washer and nuts to assemble the cross bar to the main frame (Figure 3). Rotate the folding arm back down after the crossbar is assembled.

Figure 3



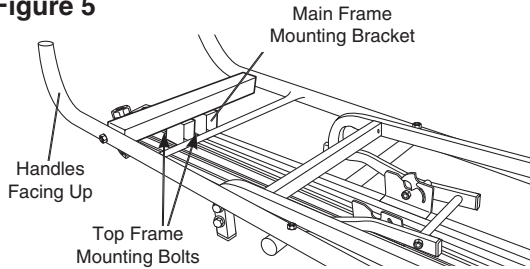
- Place the top frame upside down as shown in Figure 4. Temporarily remove the bar lock and top frame mounting nuts.

Figure 4



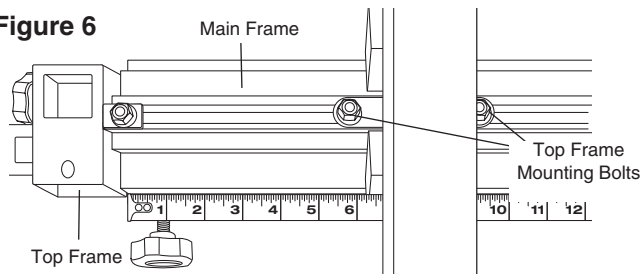
- With handles facing up, place the main frame onto the top frame. Align the holes in the main frame mounting bracket with the top frame mounting bolts (Figure 5).

Figure 5



- Slide the main frame until it is approximately 6-1/2" from the end of the left side of the top frame (Figure 6).
- Use a 13 mm socket to snug the two top frame mounting bolts. DO NOT tighten at this time.

Figure 6



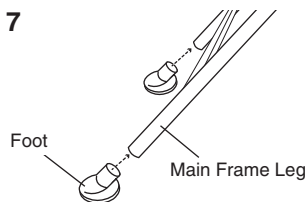
- Assemble wheels and handle shown in the OWNERS MANUAL

ASSEMBLE FEET

Refer to Figure 7

- Press the feet on to the end of each main frame leg.

Figure 7



LEVEL TOP FRAME

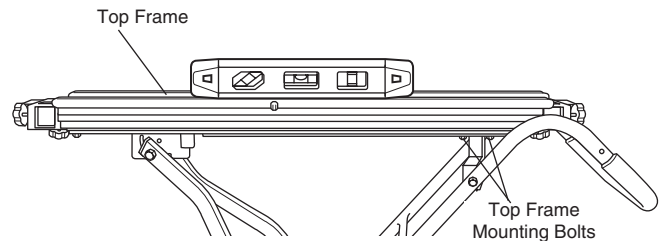
Refer to Figure 8–9

- Roll the miter saw stand over to rest on the handle and wheels as shown in Figure 4 of your Owner's Manual.
- Unfold the stand, refer to the **Unfold the Miter Saw Stand** instructions in your Owner's Manual.

NOTE: The crossbar clip will not be latched during assembly of unit.

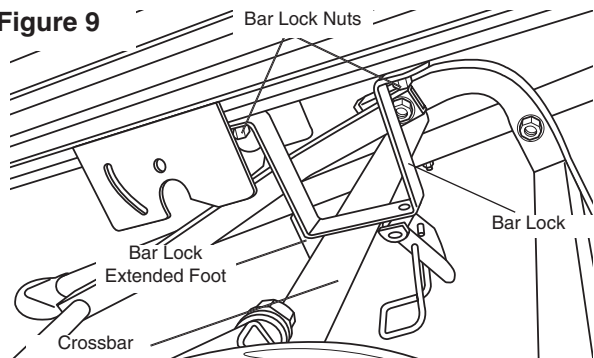
- Place a level on the on the top frame to ensure the miter saw stand is level.
 - If the top frame is level tighten the two top frame mounting bolts.
 - If the top frame is NOT level loosen the two top frame mounting bolts and slide the top frame until it is level. When level tighten the two top frame mounting bolts.

Figure 8



- Reassemble the bar lock as shown. DO NOT tighten the mounting bolts at this time.
- Slide latch pin up to release table support bar bracket and lower top frame as shown in Figure 13 under **To Fold Stand For Storage** in your Owner's Manual.
- Position the bar lock with the extended foot touching the down side of the cross bar.
- Use a 13 mm socket to tighten the bar lock nuts.

Figure 9



WARNING

For your own safety, read all of the rules and precautions before operating tool.

PLACE THIS SHEET WITH YOUR MANUAL FOR FUTURE REFERENCE.

Visit us on the web at
www.southerntechllc.com



Put these instructions and the original sales invoice in a safe, dry place for future reference.

Southern Technologies, LLC

3816 Hawthorn CT,
Waukegan, IL 60087