

**POWERTEC®**

# Single Grip Router Base Plate



## WARNING

To reduce the risk of injury, turn router off and disconnect it from power source before installing and removing accessories. An accidental start-up can cause injury.

## WARNING

For your own safety, read and follow all safety procedures listed in the router instruction manual.

## PACKAGING CONTENTS

- 1 . . . . Extended Trim Router Plate
- 1 . . . . Handle
- 1 . . . . 5/16"-18 Flat Head Screw
- 4 . . . . M4 Screws

## TOOLS NEEDED

Phillips® Head Screwdriver (not included)

## INTENDED USE

This clear acrylic router plate provides better visibility and when used with a \*PORTER-CABLE style guide bushing (sold separately) it allows a bit to follow the path intended by a template or jig. The large base and handle add stability when edge routing with bearing guided bits.

\*PORTER-CABLE is a trademark of The Stanley Black & Decker Corporation

## COMPATIBLE ROUTERS

DeWALT DWP611

DeWALT DCW600B

**NOTE:** Fixed base only. Not compatible with DWP611PK, or Plunge Base DNP612.

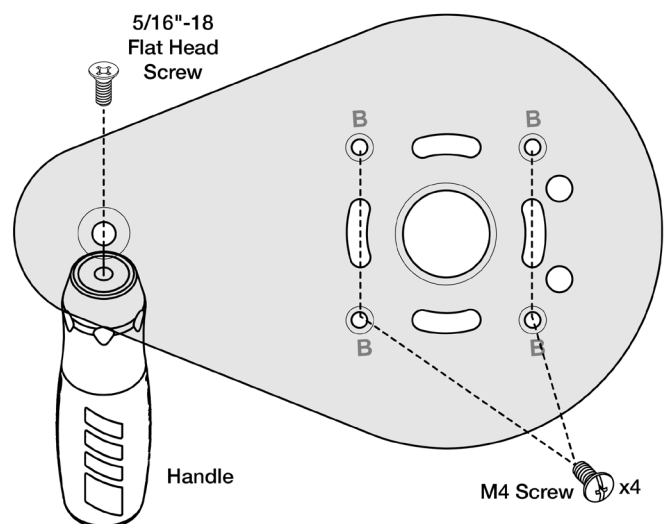
\* DeWALT is a trademark of The Stanley Black & Decker Corporation

## ASSEMBLY

- Assemble Handle to Base using a Phillips Head screwdriver (not included) and the 5/16"-18 Screw (included).
- Remove the existing router plate and all related hardware from the router.
- Place Extended Router Plate onto router base and match with appropriate holes. (Letters shown for visual reference only. Not printed on plate.)
- Rotate plate until ALL pattern holes align. Install and tighten using included M4 machine screws, or screws from router.

**NOTE:** When installing a guide bushing, use a centering pin, such as **Powertec 71833** (sold separately), to center the plate.

Figure 1

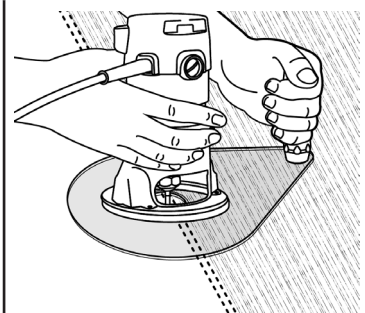


## APPLICATION

- Place router with Base Plate onto workpiece.
- Hold handle with one hand and router with the other.
- Guide router around edge of workpiece.

**NOTE:** Cut curved edges using a bushing or router bits that have a guide bearing (not included).

Figure 2



## MAINTENANCE

Carnauba wax may be applied to the Router Plate to reduce scratching and make it slide easier. If scratching does occur, carefully polish with plastic polish until scratches are removed.



Visit us on the web at [www.powertecproducts.com](http://www.powertecproducts.com)

Put these instructions and the original sales invoice in a safe, dry place for future reference.

Southern Technologies, LLC • Chicago, IL 60606