

POWERTEC®

Trim Router Base Plate with Handle



WARNING

To reduce the risk of injury, turn router off and disconnect it from power source before installing and removing accessories. An accidental start-up can cause injury.

WARNING

For your own safety, read and follow all safety procedures listed in the router instruction manual.

PACKAGING CONTENTS

- 1 Extended Trim Router Plate
- 4 M4 Screws
- 1 Handle
- 1 5/16"-18 Flat Head Screw

TOOLS NEEDED

Phillips Head Screwdriver (not included)

INTENDED USE

This clear acrylic router plate provides better visibility and when used with a PORTER-CABLE style guide bushing (sold separately) it allows a bit to follow the path intended by a template or jig. The large base and handle add stability when edge routing with bearing guided bits.

ASSEMBLY

- Assemble Handle to Base using a Phillips Head screwdriver (not included) and the 5/16"-18 Screw (included).
- Remove the existing router plate and all related hardware from the router.
- On the chart find the model and the corresponding letter for the router.
- Locate the corresponding letters for the router, see Figure 1.

NOTE: Some routers have more than one option.

- Place Extended Router Plate onto router and line up first letter with appropriate hole.
- Rotate plate until ALL pattern holes align. Install and tighten using included M4 machine screws, or screws from router.

MAINTENANCE

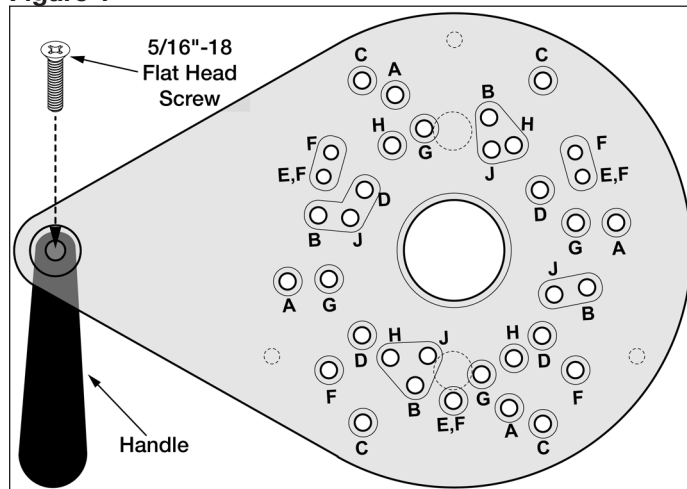
Carnauba wax may be applied to the Router Plate to reduce scratching and make it slide easier. If scratching does occur, carefully polish with plastic polish until scratches are removed.

KNOWN COMPATIBLE ROUTERS

DeWALT*	DWP611PK	A	Plunge Base
		B	Fixed Base
Makita*	RT0701CX7	C	Plunge Base
		D	Fixed Base (196613-4)
Bosch*	GKF125CEN	E	Fixed Base (PR001, PR101)
	PR10E/PR20EVS	F	Fixed Base (PR001, PR101)
Ryobi*	P601	G	
PORTER CABLE*	PCE6435	H	
Milwaukee*	M18	J	
RIDGID*	R2401/R24012	G	

* PORTER-CABLE, DeWALT, Craftsman are trademarks of The Stanley Black & Decker Corporation—Makita is a trademark of Makita Corporation—Bosch is a trademark of the Robert Bosch Tool Corporation—Ryobi is a trademark of Ryobi Limited and is used by Techtronic Industries Company LTD—Milwaukee is a trademark of Milwaukee Electric Tool Corporation—RIDGID is a trademark of RIDGID, Inc.

Figure 1

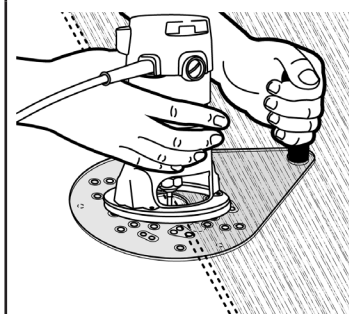


APPLICATION

- Place router with Base Plate onto workpiece.
- Hold handle with one hand and router with the other.
- Guide router around edge of workpiece.

NOTE: Cut curved edges using a bushing or router bits that have a guide bearing (not included).

Figure 2



Visit us on the web at www.powertecproducts.com



Put these instructions and the original sales invoice in a safe, dry place for future reference.

Southern Technologies, LLC • Chicago, IL 60606