

# POWERTEC®

## Adjustable Flip Stop



### WARNING

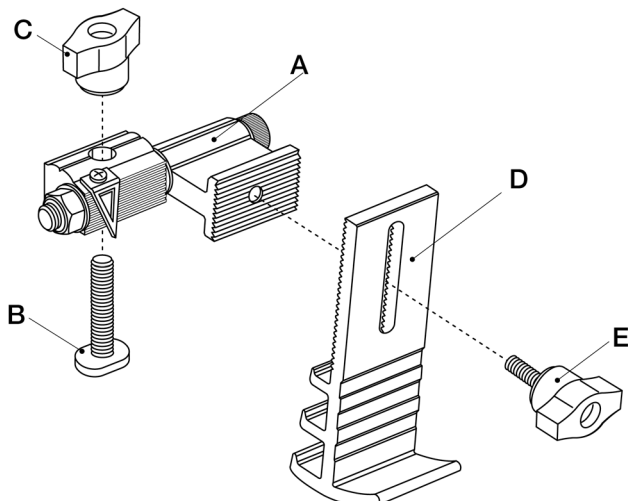
For your own safety, read the machine's instruction manual before using any accessory. Failure to heed these warnings may result in serious personal injury and damage to the tool and the accessory.

- Before using the Flip Stop, read and follow all instructions and safety information provided.
- Always keep hands clear of blade, cutter, sanding disc/belt.
- Before making adjustments to the Flip Stop turn off the power, allow the blade, cutter or sanding disc/belt to come to a complete stop and unplug the machine.
- Before turning on power after adjustments, ALWAYS verify there is a safe clearance between the blade and fence.

### UNPACKING CONTENTS

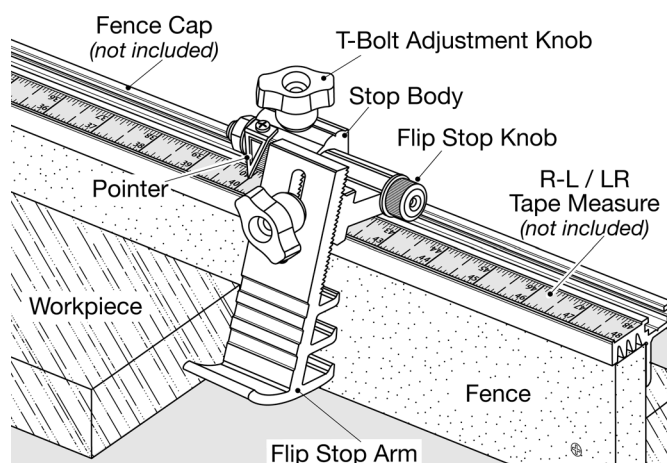
**NOTE:** Check for shipping damage. Check immediately whether all parts and accessories are included.

ITEM	DESCRIPTION	QTY
A	Flip Stop (to be assembled with B through E)	1
B	T-Bolt	1
C	Knob (for T-Bolt)	1
D	Flip Stop Arm	1
E	Screw-on Knob	1



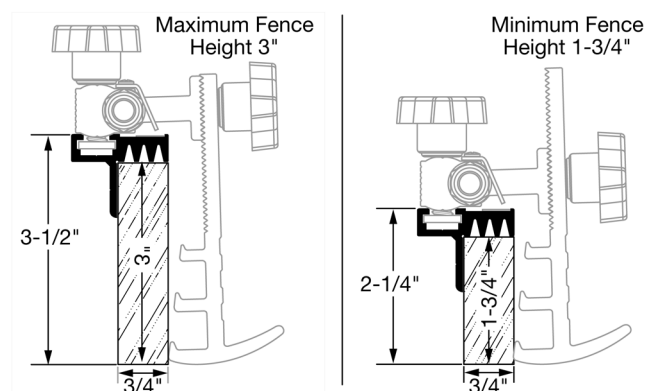
### APPLICATION

Figure 1



### ADJUSTABLE HEIGHTS

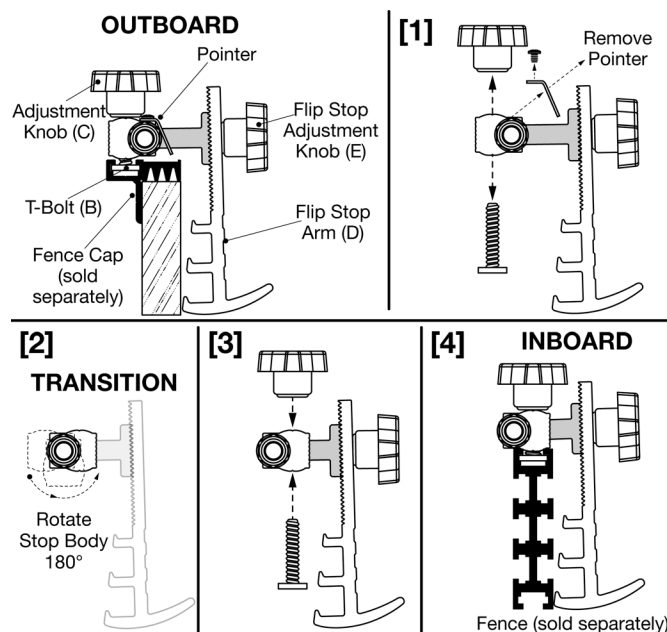
Figure 2



### Convert from OUTBOARD to INBOARD:

- [1] Remove Knob (C), T-Bolt (B) and Pointer. Keep the pointer and screw for future OUTBOARD use.
- [2] Rotate Stop Body 180°.
- [3] Reattach T-Bolt and Knob.
- [4] Flip stop is now in **INBOARD** position. **NOTE:** Pointer is usable for **OUTBOARD** only.

Figure 3



## OPERATION

### The Adjustable Flip Stop:

1. The Adjustable Flip Stop mechanism operates with Lock Knobs and interlocking grooves on the Swing Arm and Stop Arm.
2. The assembled Flip Stop slides into the T-slot on top of the fence using a T-bolt and tightens securely with the Adjustable Knob eliminating any side movement or slack.
3. The Flip Stop mechanism functions from the Right or the Left side of the body depending the setup.

4. The Flip Stop Arm can be reconfigured on the left or right side of the body. The configuration determines the offset distance from the Flip Stop Arm to the Pointer.

#### OFFSETS:

**Outfeed (LEFT side): 2-17/32"** Flip Arm to RIGHT of body.

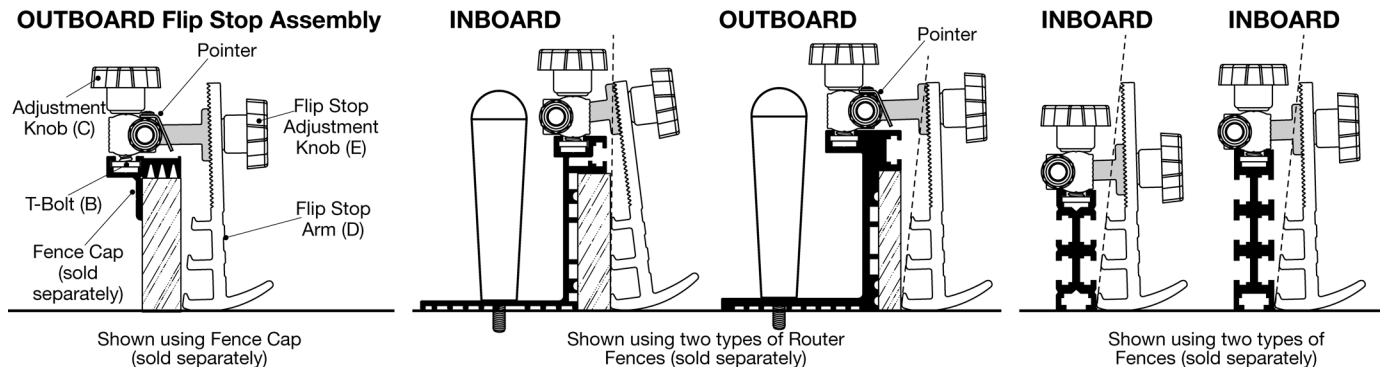
**Outfeed (LEFT side): 5/16"** Flip Arm to LEFT of body.

**Infeed (RIGHT side): 1-9/64"** Flip Arm to RIGHT of body.

**Infeed (RIGHT side): 1-11/16"** Flip Arm to LEFT of body.

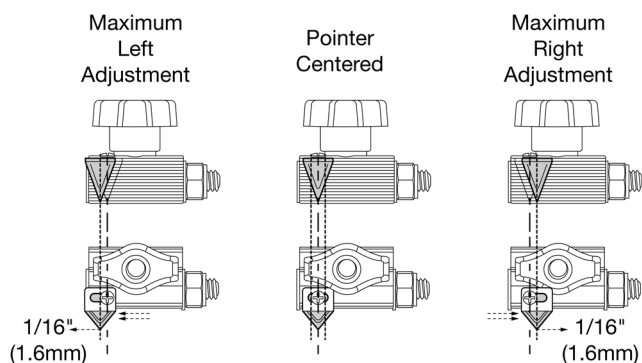
5. The Flip Stop converts from an Outboard position to an Inboard position, making it versatile by allowing its use with several different fence styles. To convert, remove the T-Bolt and Knob and rotate the body 180 degrees. (See Figure 3)

Figure 4



### Adjust the Pointer:

Figure 5



**The setup may require a fine adjustment to the Pointer to ensure an accurate reading.**

1. During setup verify Pointer is center aligned.
2. There is a movement allowance of 1/16" (1.6mm) to the Left and Right of the Pointer's center.
3. This allows the user the ability to make small-scale modifications that may be necessary to calibrate a setup to the exact measurements needed.
4. To use this option, loosen the screw on top of the Pointer and carefully move and set it to the position needed.
5. Tighten the screw and run a test cut to verify the setting.

## GENERAL MAINTENANCE

### ⚠ WARNING

When servicing, use only identical replacement parts. Use of any other parts may create a hazard or cause product damage.

### ⚠ WARNING

Keep the Flip Stop dry, clean, and free from oil and grease. Always use a clean cloth when cleaning. Never use brake fluids, gasoline, petroleum-based products or any strong solvent to clean the Flip Stop. Chemicals can damage, weaken or destroy plastic which may result in serious personal injury.

Visit us on the web at [www.powertecproducts.com](http://www.powertecproducts.com)



Put these instructions and the original sales invoice in a safe, dry place for future reference.

Southern Technologies, LLC • Chicago, IL 60606