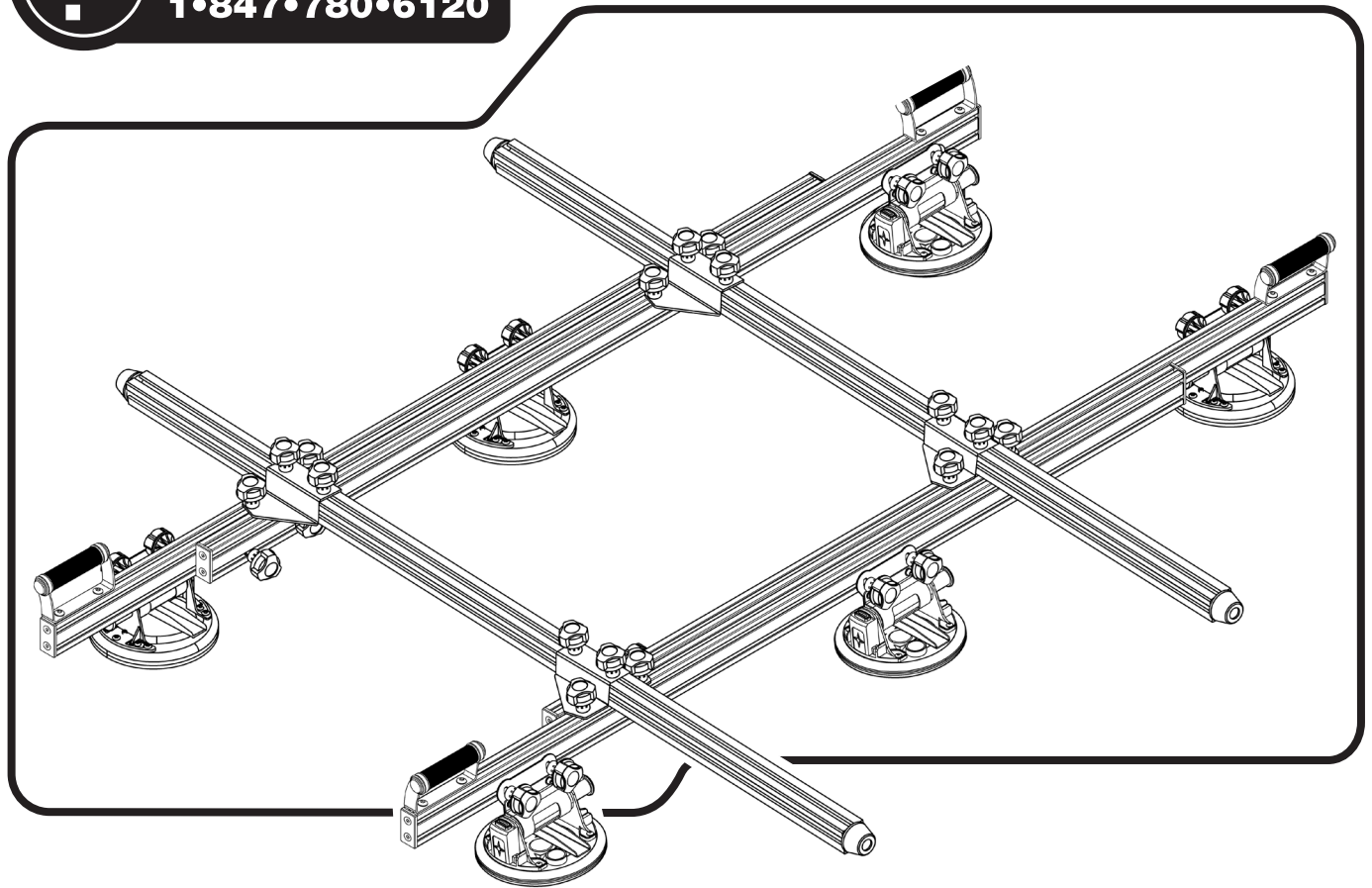


Owner's Manual

POWERTEC *PRO*[™]

Heavy Duty Large Form Slab Carry System



Visit us on the web at www.powertecproducts.com



You will need this manual for safety instructions, operating procedures, and warranty.
Put it and the original sales invoice in a safe, dry place for future reference.

TABLE OF CONTENTS

SECTION

PAGE



SAFETY RULES / WARNINGS

3



CONTENTS

4



ASSEMBLY

4-7



OPERATION

8-9



MAINTENANCE

10



PARTS ILLUSTRATION & LIST

10-11



WARRANTY

12

PRODUCT SPECIFICATIONS

Dimensions:65.35" x 65.2" x 9" (166 x 165.6 x 22.8 cm)

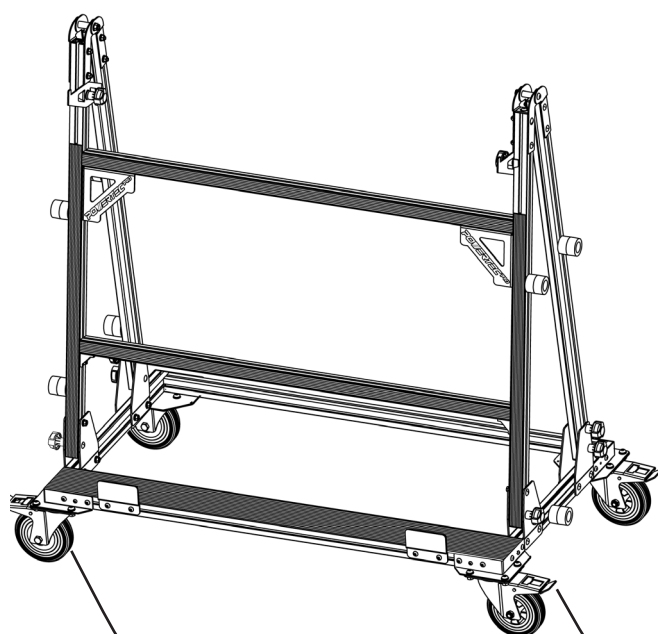
Open Dimensions: . . .118.1" x 65.2" x 9" (300 x 165.6 x 22.8 cm)

Maximum Weight Limit: 352 lbs (160 kg)

. Total weight including Carry System

The 71985 Carry System is designed for handling large-format tile & slabs up to 118.1" x 65.35" (300 x 166cm).

The **POWERTEC^{PRO} 71983 Transport Cart** is a Companion Product Sold Separately



2 each, Non-marring Swivel Casters

2 each, Non-marring Swivel Casters With Brake



⚠ WARNING

For your own safety, read all of the rules and precautions before operating tool.

⚠ WARNING

This product was designed to be used as a Carry System. Do not overload. The maximum capacity for the Carry System is **352 lbs (160 kg)**.

- Do not use for scaffolding or as ladder. Do not stand or climb on the Carry System; it could tip over, causing serious injury.
- Do not apply an unbalanced load. This could cause the Carry System to tip over.
- Store the Carry System properly. Do not store the Carry System outdoor or in a damp location.
- Keep the work area clean, uncluttered, and well lit. Do not work on or place the Carry System on floor surfaces that are slippery from dust, oil, water or wax.
- Keep children and bystanders away while operating a power tool. Distractions may cause you to lose control. Visitors should wear the same safety equipment as the operator.
- Place the Carry System on a flat level surface to prevent rocking or tipping.
- Dress properly. Do not wear loose clothing or jewelry. Keep your hair, clothing and gloves away from moving parts. Loose clothes, jewelry or long hair can be caught in moving parts. Always wear non-slip footwear. Tie back long hair. Roll long sleeves above the elbow.

⚠ WARNING

Always follow proper operating procedures as defined in this manual even if you are familiar with use of this Carry System or any tool used with this Carry System. Remember that being careless for even a fraction of a second can result in severe personal injury.

You must be familiar with the use of any tool or accessory used with this Carry System. The supplier cannot be held responsible for any accident, injury or damage incurred while using this Carry System with any tool.

⚠ WARNING

Do not modify this Carry System and/or use it for any application other than that for which it was designed.

FOLLOW ALL STANDARD SAFETY PRECAUTIONS, INCLUDING:

- Keep children and visitors at a safe distance from work area.
- Wear proper apparel.
- Wear protective hair covering to contain long hair.
- Wear safety shoes with non-slip soles.

Always Read the Instructions	Always Wear Safety Gloves	Always Wear a Visibility Vest	Always Wear Protective Footwear

- Be alert and think clearly. Never operate power tools when tired, intoxicated or when taking medications that cause drowsiness.
- Use the right tool for the job. Do not force the tool to do a job for which it was not designed.

⚠ CAUTION

Think safety! Safety is a combination of operator common sense and alertness at all times when tools are being used.

⚠ WARNING

Do not use the Carry System until it is completely assembled and you have read and understood this entire operating manual and the operating manual of the tool being used with this Carry System.

SAVE ALL WARNINGS AND INSTRUCTIONS FOR FUTURE REFERENCE





CONTENTS

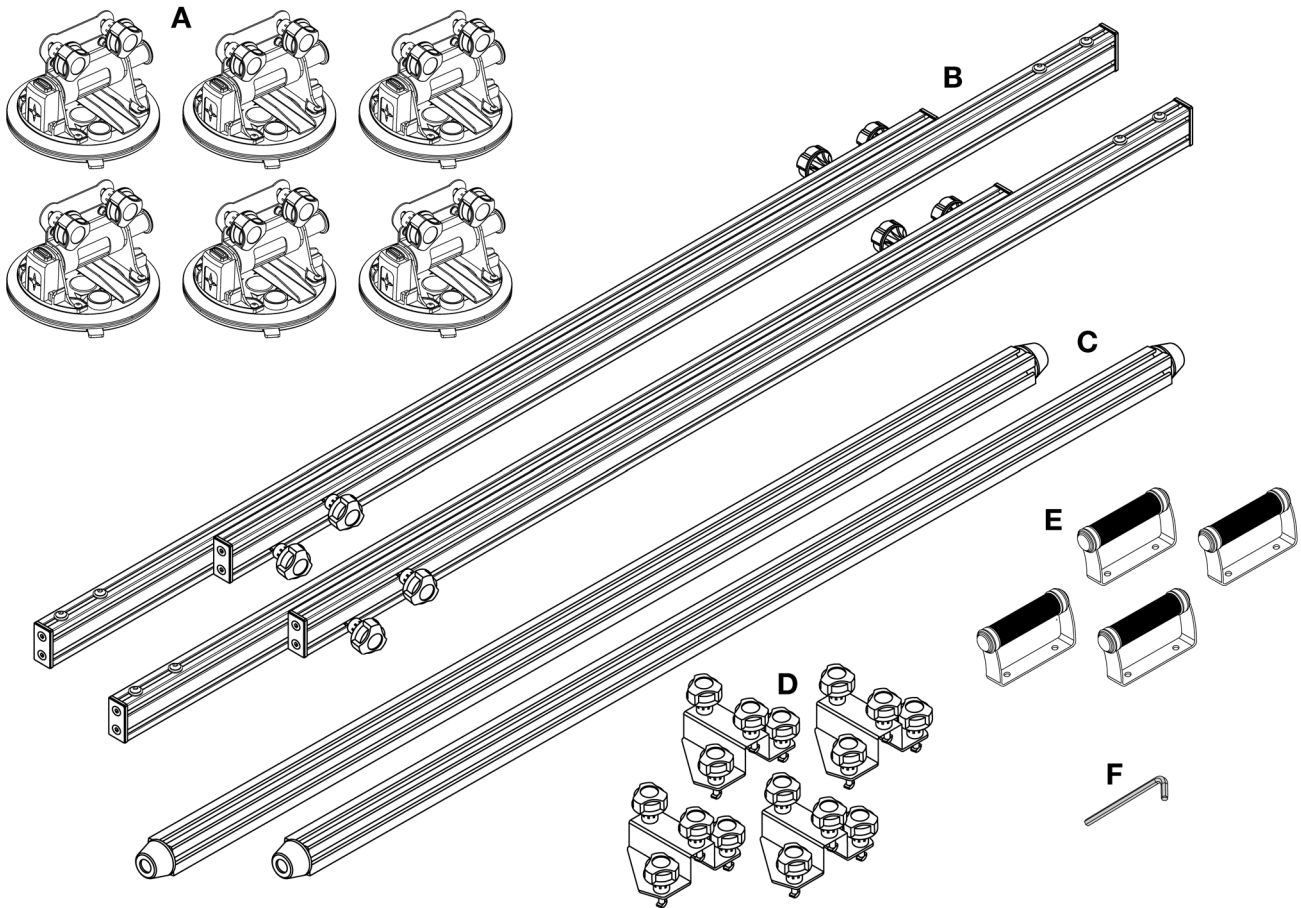
UNPACKING Refer to Figure 1

- The Large Slab Carry System is shipped un-assembled. Contact the customer service center if any parts are missing.
- Examine shipping carton for freight damage before opening. If shipping carton is damaged file a claim with carrier immediately.
- Carefully unpack all loose items from shipping carton and make sure all parts are accounted for.

ITEM	MAIN COMPONENTS DESCRIPTION	QTY
A	Vacuum Suction Cups (Each with 2 bolts & knobs assembled)	6
B	Track Assembly (Each with 4 bolts & knobs)	2
C	Cross-Connection Support Bar	2
D	Cross-Connection Support Brackets (with T-Slot Drop-in Bolts)	4
E	Carry Handle	4
F	5mm Hex Wrench	1



4 Figure 1

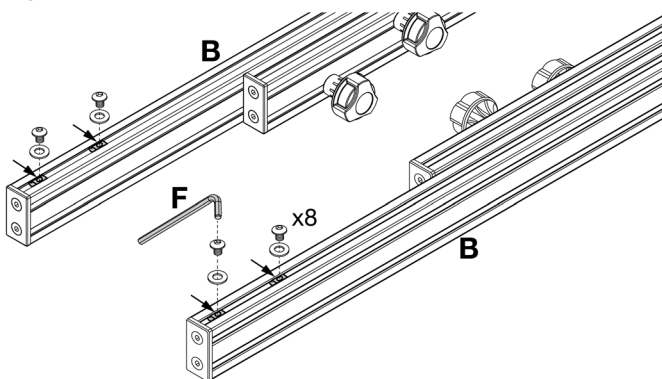


ASSEMBLY

ATTACH HANDLE (E) TO TRACK (B)

1. Use Hex Wrench (F) to remove screws and washers from each track assembly. Locate 8 pre-installed square nuts on Tracks (B)—2 nuts on each end.

Figure 2



2. Observe the curvature of Carry Handles (E) and position at opposite ends on each Transport Bar (B).
3. Take 4 Carry Handles (E). Insert 2 screws and washers through the holes in handle and thread into the square nuts. Align position of handle—tighten with 5mm Hex Wrench (F).

Figure 3

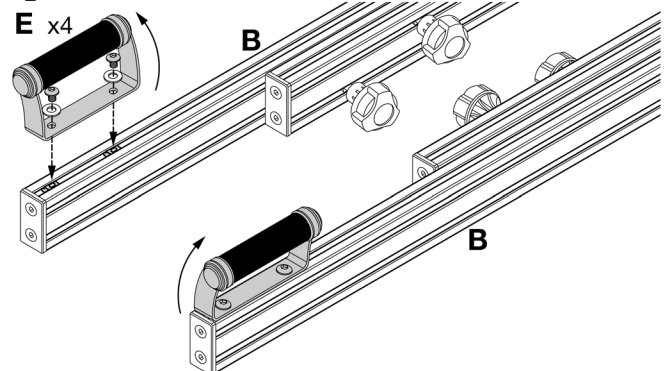
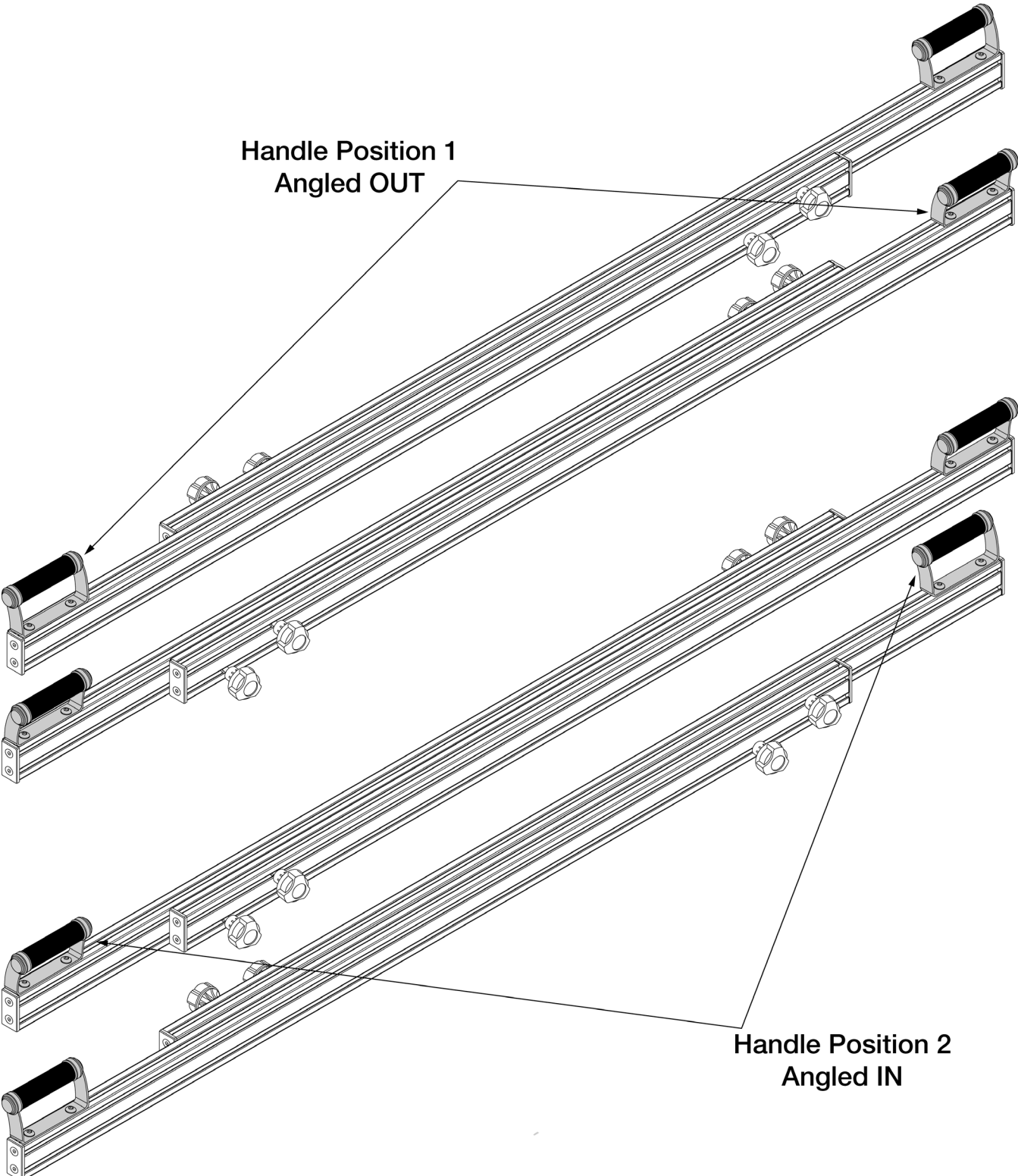


Figure 4



Handle Position 1
Angled OUT

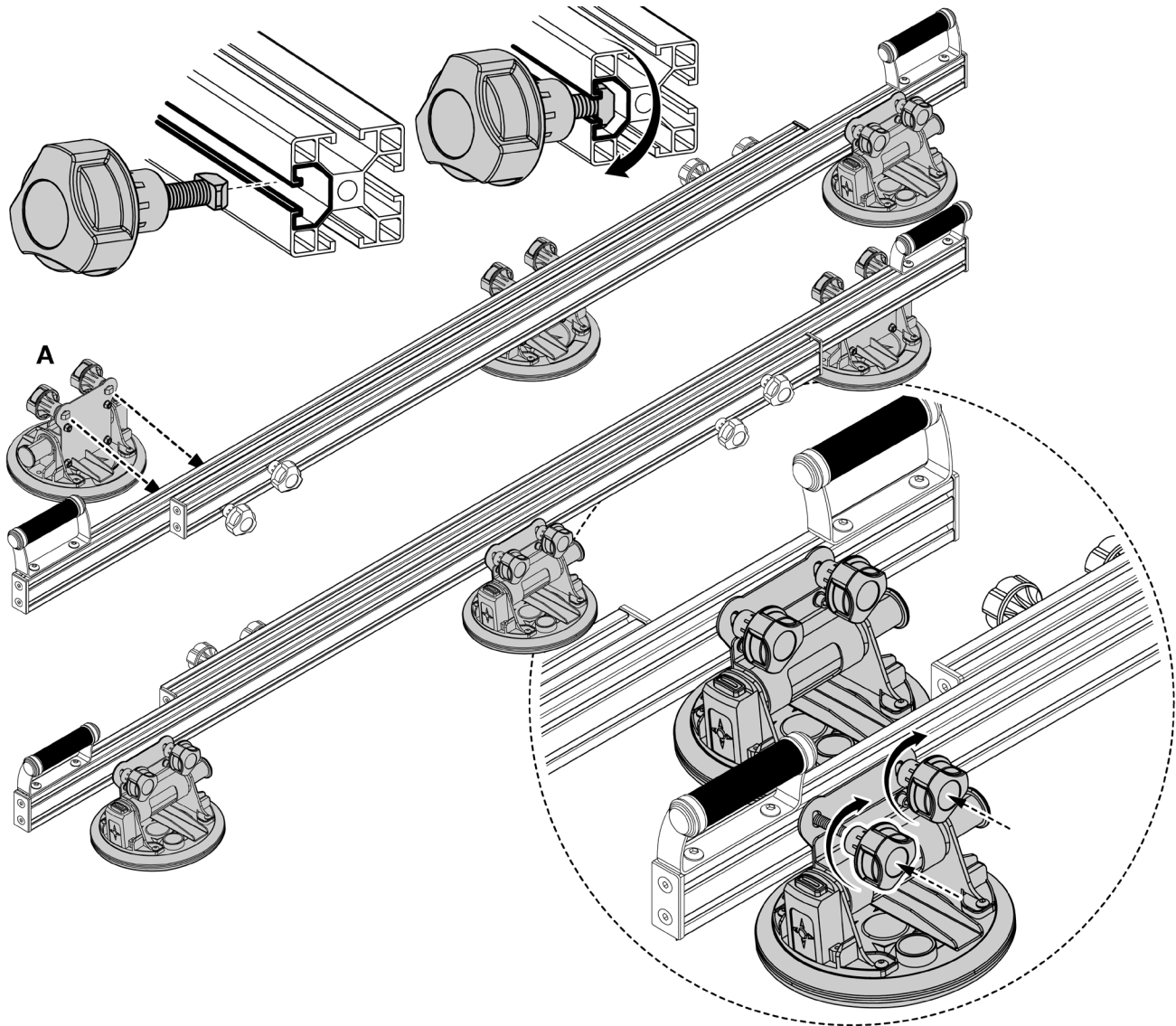
Handle Position 2
Angled IN

- **Pertains to Figures 5-8.** Loosen knobs enough for T-Slot Drop-in Bolts to slide into T-track slots. Turn knobs clockwise allowing T-Slot Drop-in Bolts to position into place locking them into the T-track and securing them to the fence.

Note: Do not fully remove T-Slot Drop-in Bolts from the knob. Align T-Slot Drop-in Bolts parallel with T-track slots for insertion into the tracks on the rails.

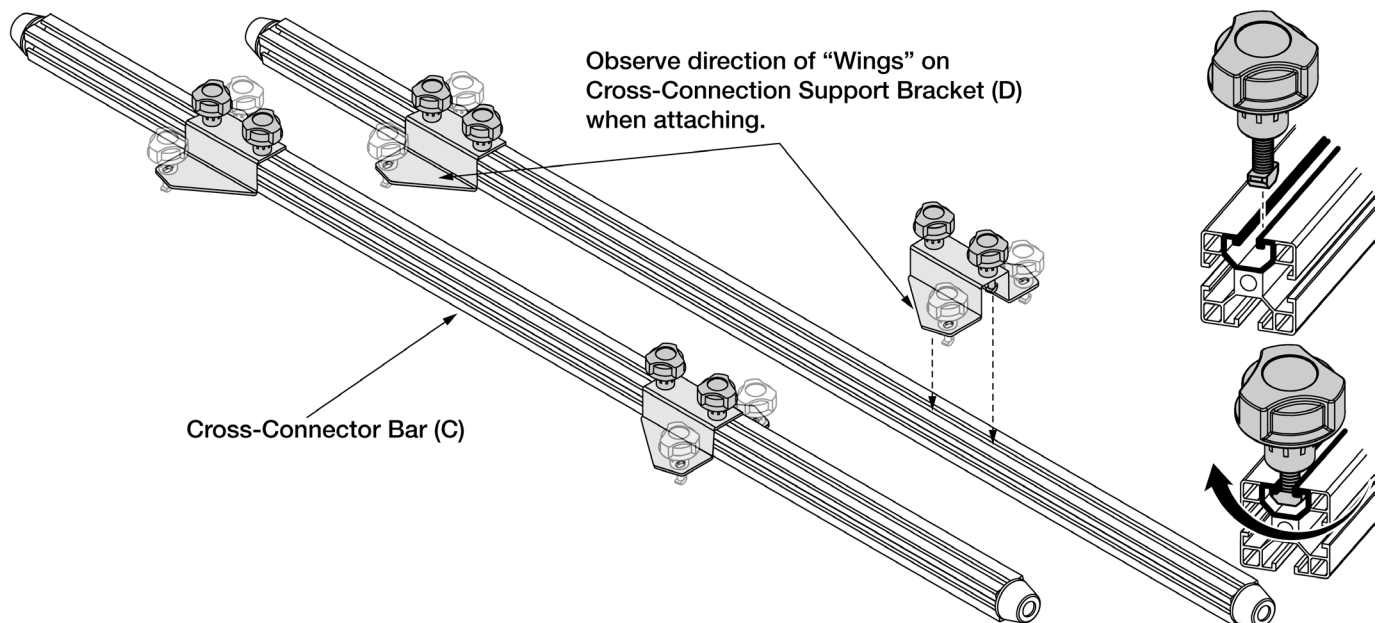
ATTACH VACUUM SUCTION CUPS (A)

Figure 5



ASSEMBLE CROSS-CONNECTION SUPPORT BARS

Figure 6



ATTACH CROSS-CONNECTION SUPPORT BARS TO TRANSPORT BARS

Figure 7

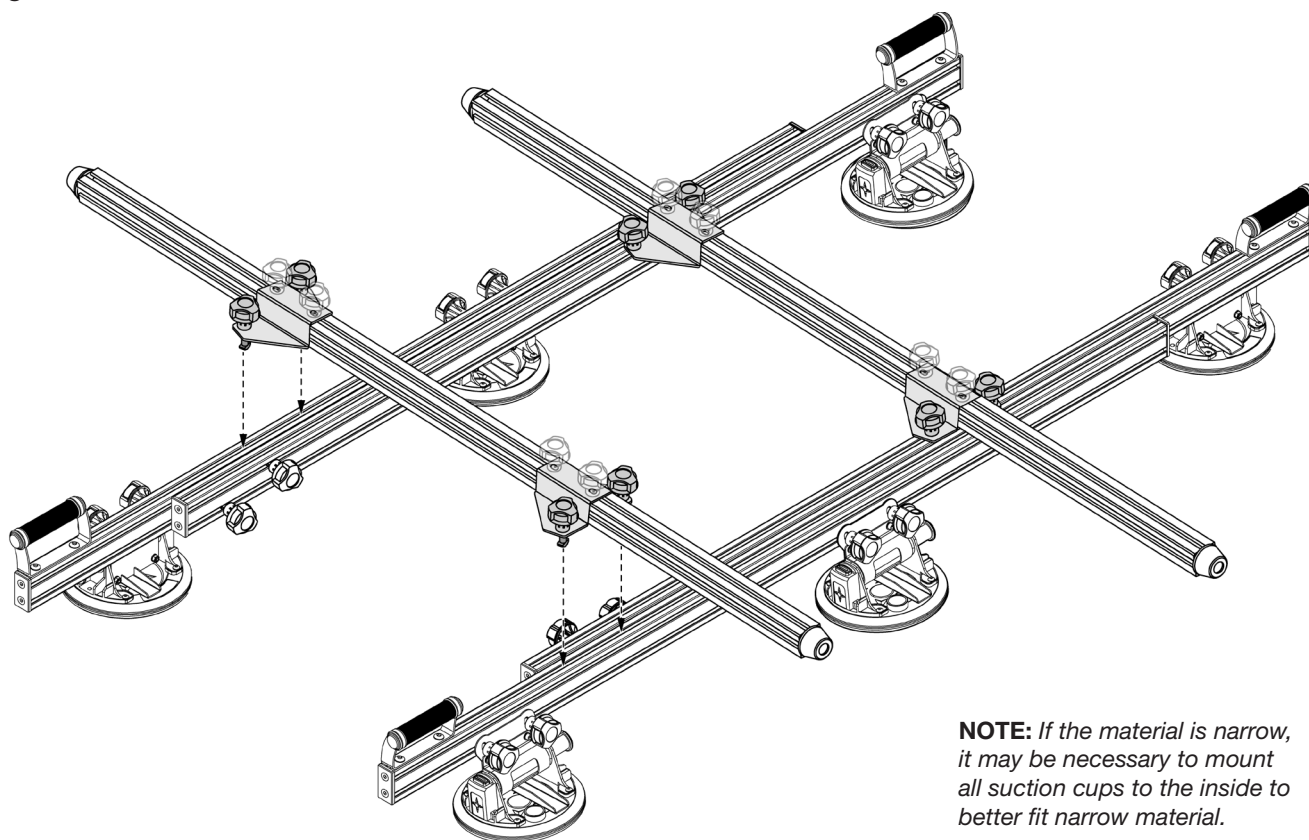


Figure 8 Ensure Alignment Is Equal at All Points From Center

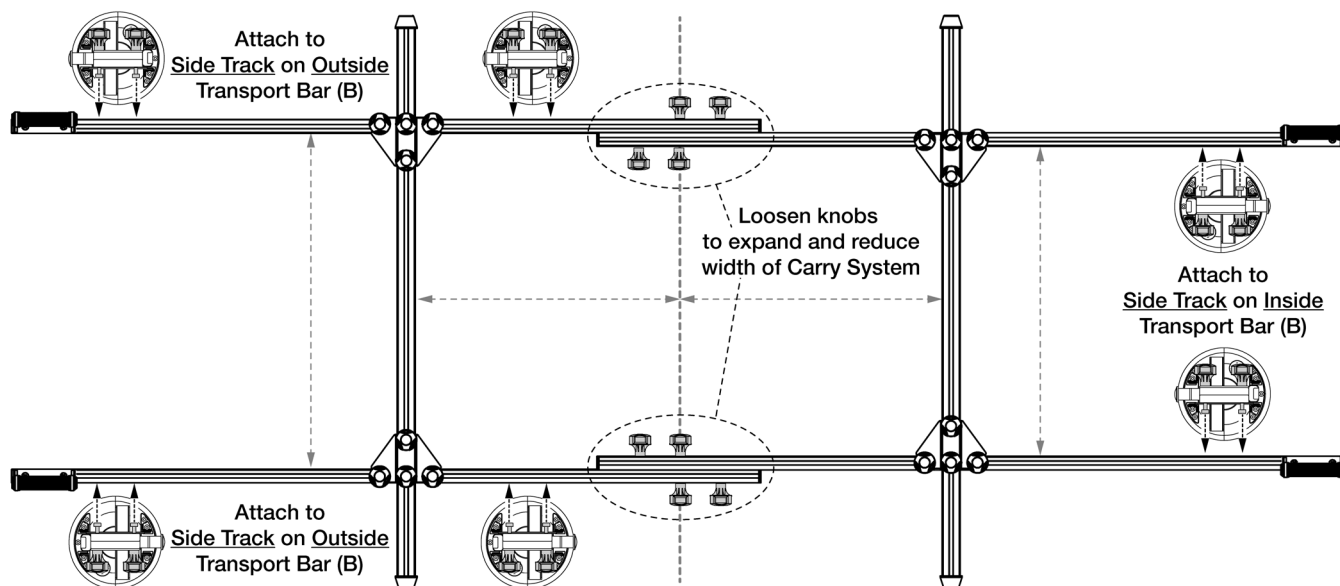
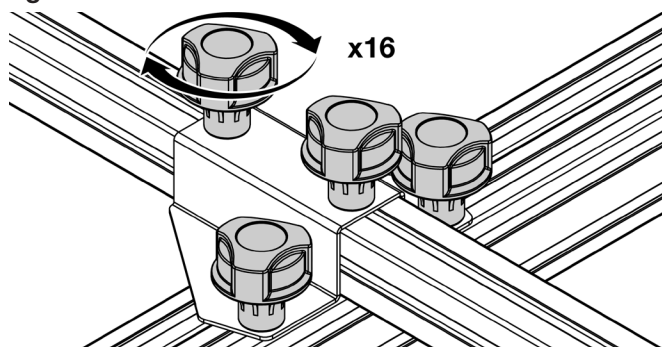


Figure 9



Check and Tighten All Knobs



OPERATION

ACTIVATE THE MANUAL SUCTION CUP

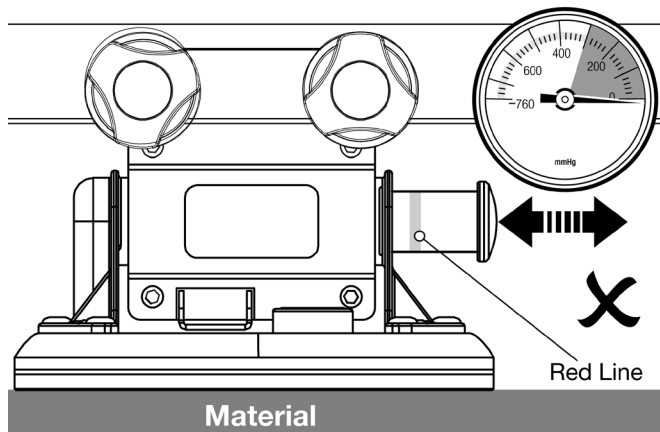
- Use on clean, smooth, nonporous material.
- Temperature limits from 10° to 120° F (-12° to 49° C)
- Moisture or contaminants can cause slip resistance.

NOTE: Ensure Suction Cup surface is in good shape. Check for staining, deformation, tears or debris before placement.

1. Position Suction Cup onto material surface so the RED LINE will be noticeable if it appears while lifting.

Figure 10

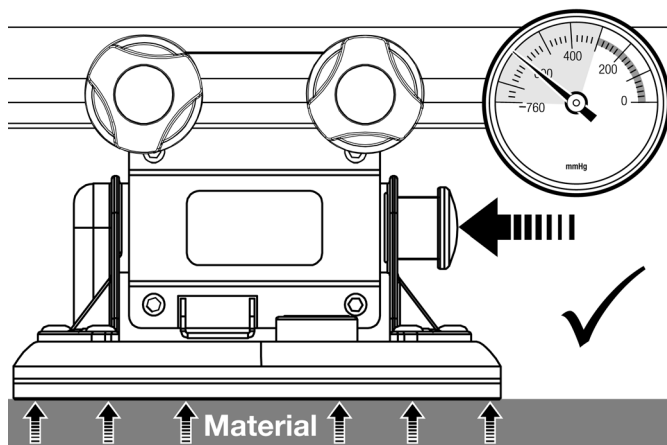
Red Area: Insufficient Suction



2. Manually pump the plunger until Suction Cup attaches completely. When the Red Line recedes, vacuum is sufficient for lifting.
3. Check plunger frequently to ensure Suction Cup remains securely attached. If the Red Line appears while lifting, immediately set down the load and pump plunger until Red Line recedes again (see WARNINGS).

Figure 11

Green Area: Sufficient Suction



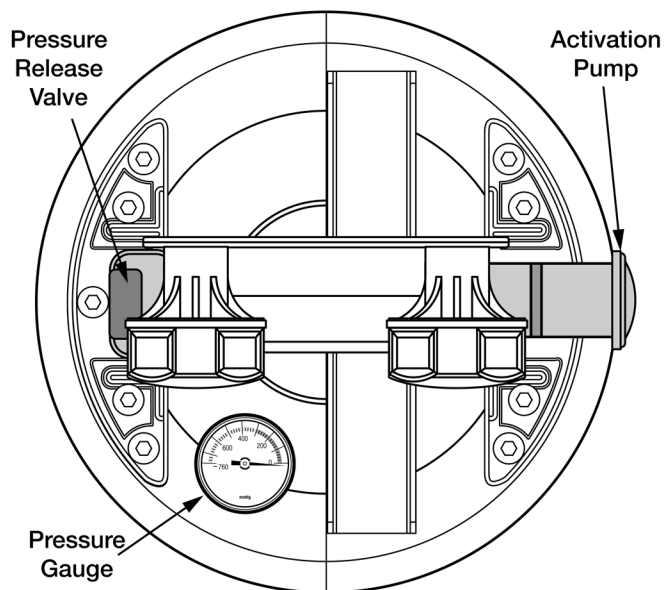
⚠ WARNING

Risk of serious injury or material damage. NEVER touch or bump the Release Valve while lifting.

SUCTION RELEASE VALVE/BUTTON

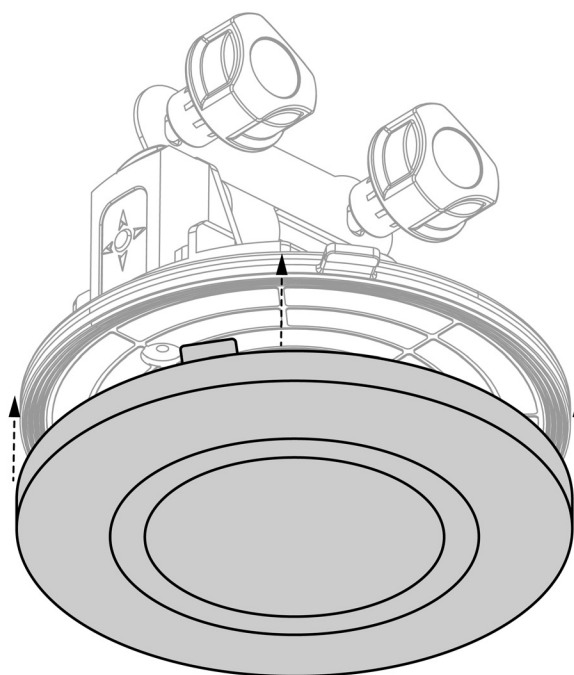
1. After placing load in desired location manually push the release valve/button until the Suction Cup disengages.
2. Remove and store Suction Cups when not in use.

Figure 12



3. Cover Suction Cups with protective cover when not in use or during storage.

Figure 13



APPLICATION

⚠ WARNING

Risk of serious injury or material damage.
NEVER attempt to use Carry System alone.
This is ALWAYS an operation requiring at least two people.
In some cases 3-4 persons are necessary for safe handling.

⚠ CAUTION

The absolute load capacity is 352 lbs (160 kg) including the weight of the Carry System.

Figure 14

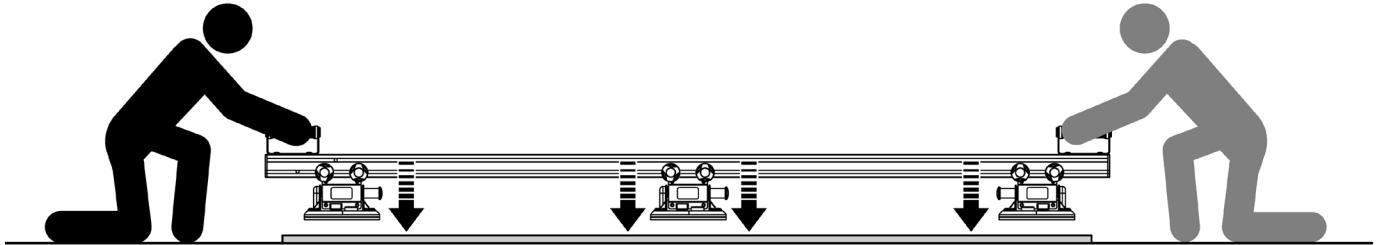
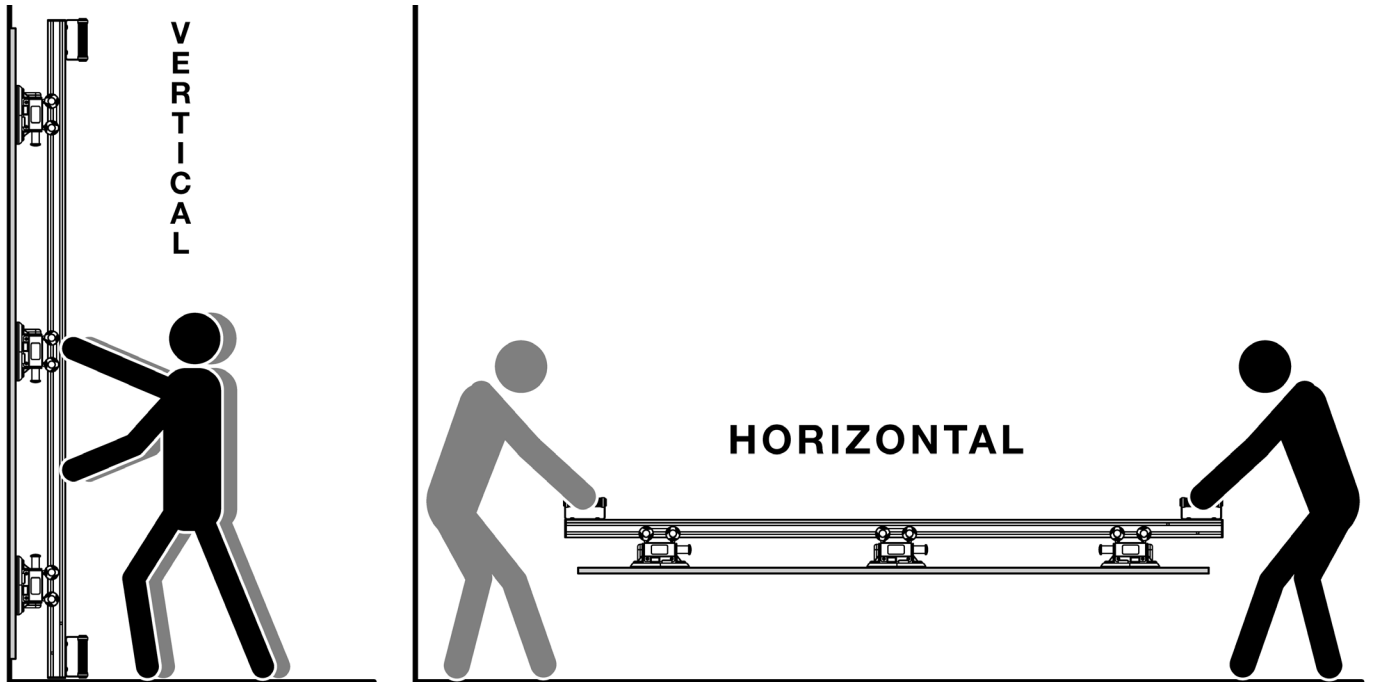


Figure 15 Material Placement





INSPECTION

Examine and test the Suction Cup regularly to make sure it does not exhibit the following faults:

- Cuts or damage to sealing edges of rubber pad.
- Cracks or dents in handle or pump.
- Reappearance of red line soon after attaching Suction Cup.
- Sluggishness or dramatic changes in pump action.
- Excessive glaze or stiffness of rubber pad.

Correct any faults before using the Suction Cup (see Service).

Service

Aging and wear reduce the suction capabilities of the rubber pad. Recommended replacement every 2 years.

If Suction Cup is damaged, replace immediately.

Storage

Store the Suction Cup in clean, dry condition within its protective carrying case.

WARNING

Risk of serious personal injury. Failure to observe WARNINGS could damage the Suction Cup or the load, or cause injury to the user.

- Do not use the Suction Cup to lift loads that exceed the Maximum Load Capacity or the effective capacity.
- Do not use the Suction Cup to support a person.
- Do not place the Suction Cup face against surfaces which could damage the sealing edges.
- Avoid conditions that could cause the Suction Cup to slip or to disengage prematurely, such as: contaminants, cuts or scratches in the Suction Cup face or contact surface; applying the Suction Cup to porous materials; or applying pressure against the Suction Cup edge.
- Do not use the Suction Cup to lift when the red line is visible. If the red line reappears frequently, discontinue use and refer to Service instructions.
- Do not allow anything to interfere with free movement of the plunger while the Suction Cup is attached.
- Do not touch valve release (on other Discs) while lifting.
- Do not use harsh chemicals (such as solvents or gasoline) or unauthorized rubber cleaners and conditioners to clean the Suction Cup.

GENERAL MAINTENANCE

WARNING

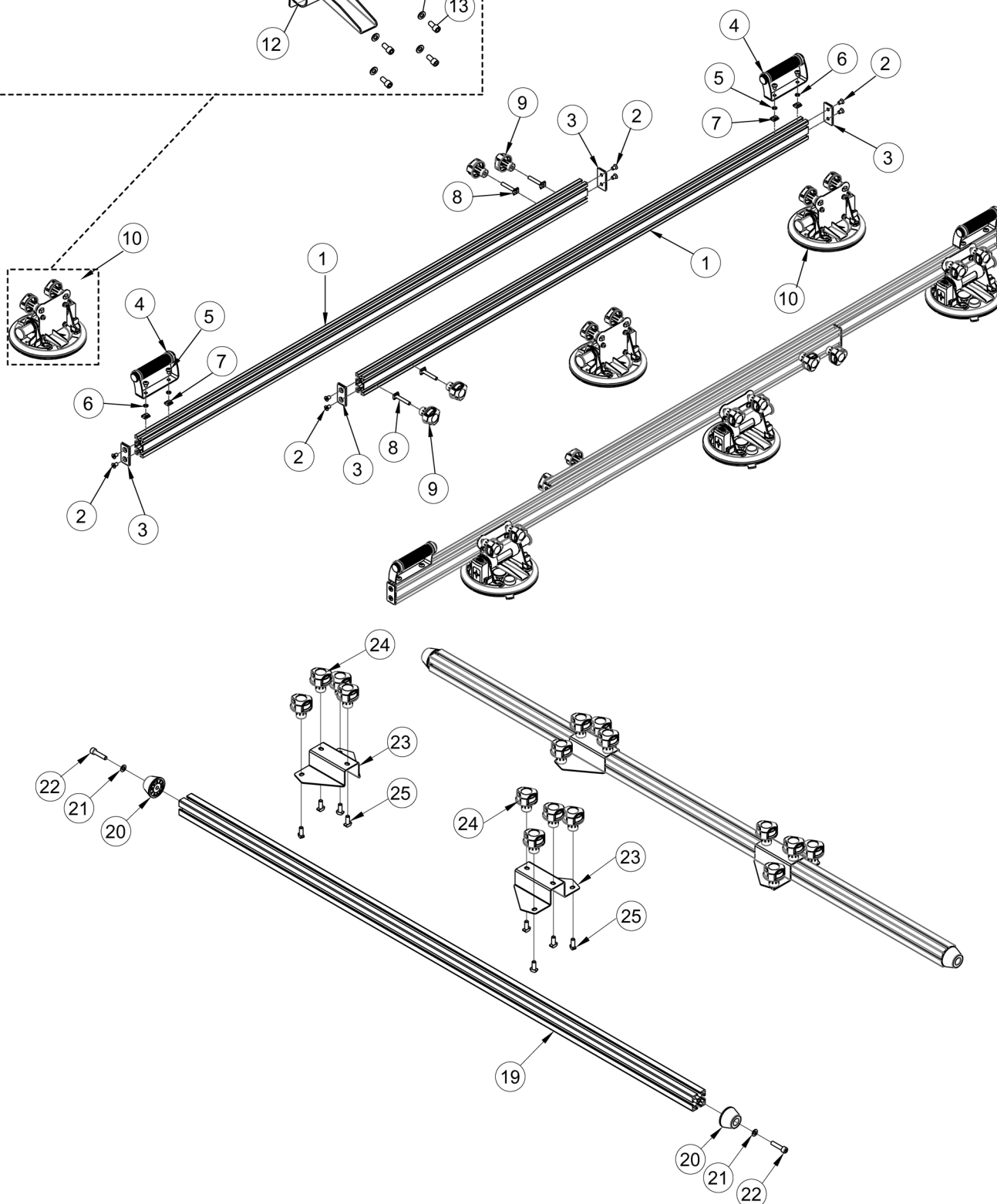
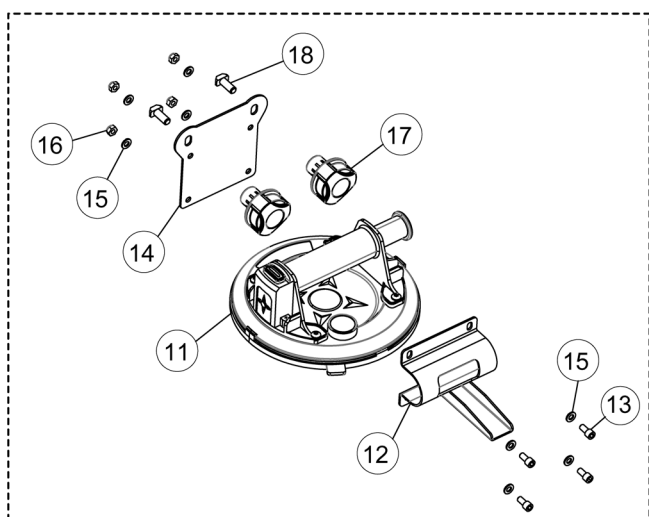
When servicing, use only identical replacement parts. Use of any other parts may create a hazard or cause HD Large Slab Carry System damage.

WARNING

Keep the HD Large Slab Carry System dry, clean, and free from oil and grease. Always use a clean cloth when cleaning. Never use brake fluids, gasoline, petroleum based products or any strong solvent to clean the HD Large Slab Carry System can damage, weaken or destroy plastic which may result in serious personal injury.



Key No.	Part No.	Description	Qty
1	71985001	Heavy Duty Slab Transport Bar	4
2	71985002	Flat Head Screws 8x16	16
3	71985003	End Cap	8
4	71985004	Carry Handle	4
5	71985005	Pan Head Screws 8x12	8
6	71985006	M8 Washer	8
7	71985007	Square Nut	8
8	71985008	T-Slot Drop-in Bolts M8x54	8
9	71985009	Black Knob	8
10	71985010	Vacuum Suction Cup Assembly	
11	71985011	Vacuum Suction Cup 8"	6
12	71985012	Vacuum Suction Cup Front Bracket	6
13	71985013	Socket Head Cap Screw M6x12	24
14	71985014	Vacuum Suction Cup Rear Bracket	6
15	71985015	M6 Washer	48
16	71985016	M6 Nut	24
17	71985017	Black Knob	12
18	71985018	T-Slot Drop-in Bolts M8x26	12
19	71985019	Cross-Connection Support Bar	2
20	71985020	Round End Cap	4
21	71985021	M8 Washer	4
22	71985022	Socket Head Cap Screw M8x35	4
23	71985023	Cross-Connection Support Bracket	4
24	71985024	Black Knob	16
25	71985025	T-Slot Drop-in Bolts M8x26	16





WARRANTY

Thank you for investing in a **POWERTEC^{PRO}**™ power tool. This product has been designed and manufactured to meet high quality standards and is guaranteed for domestic use against defects in workmanship or material for a period of 12 months from the date of purchase. This guarantee does not affect your statutory rights.

SOUTHERN TECHNOLOGIES LLC. BENCH TOP AND STATIONARY POWER TOOL LIMITED 1 YEAR WARRANTY AND 30-DAY SATISFACTION GUARANTEE POLICY

1 **POWERTEC^{PRO}** products are designed and manufactured by **Southern Technologies LLC**. All warranty communications should be directed to **Southern Technologies LLC** by calling 847-780-6120 (toll free), 9 AM to 5 PM, Monday through Friday, US Pacific Time.

30- DAY SATISFACTION GUARANTEE POLICY

During the first 30 days after the date of purchase, if you are dissatisfied with the performance of this **POWERTEC^{PRO}** tool for any reason, you may return the tool to the retailer from which it was purchased for a full refund or exchange. You must present proof of purchase and return all original equipment packaged with the original product. The replacement tool will be covered by the limited warranty for the balance of the one year warranty period.

LIMITED ONE YEAR WARRANTY

This warranty covers all defects in workmanship or materials in this **POWERTEC^{PRO}** tool for a one year period from the date of purchase. This warranty is specific to this tool. **Southern Technologies, LLC** reserves the right to repair or replace the defective tool, at its discretion.

HOW TO OBTAIN SERVICE

To obtain service for this **POWERTEC^{PRO}** tool you must return it, freight prepaid, to **POWERTEC^{PRO}**. You may call (toll free) 847-780-6120 for more information. When requesting warranty service, you must present the proof of purchase documentation, which includes a date of purchase. **POWERTEC^{PRO}** will either repair or replace any defective part, at our option at no charge to you. The repaired or replacement unit will be covered by the same limited warranty for the balance of one year warranty period.

WHAT IS NOT COVERED

This warranty applies to the original purchaser at retailer and may not be transferred.

This warranty does not cover consumable items such as saw blades, knives, belts, discs, cooling blocks, and sleeves. This warranty does not cover required service and part replacement resulting from normal wear and tear, including accessory wear.

This warranty does not cover any malfunction, failure or defect resulting from:

- 1) Misuse, abuse, neglect and mishandling not in accordance with the owner's manual.
- 2) Damage due to accidents, natural disasters, power outage, or power overload.
- 3) Commercial or rental use.
- 4) Alteration, modification or repair performed by persons not recommended by **POWERTEC^{PRO}**.

DISCLAIMER

To the extent permitted by applicable law, all implied warranties, including warranties of MERCHANTABILITY or FITNESS FOR A PARTICULAR PURPOSE, are disclaimed. Any implied warranties, that cannot be disclaimed under state law are limited to one year from the date of purchase. **Southern Technologies LLC**. is not responsible for direct, indirect, incidental or consequential damages. Some states do not allow limitations on how long an implied warranty lasts and/or do not allow the exclusion or limitation of incidental or consequential damages, so the above limitations may not apply to you. This warranty gives you specific legal rights, and you may also have other rights which vary from state to state. Southern Technologies LLC., makes no warranties, representations, or promises as to the quality or performance of its power tools other than those specifically stated in this warranty.

POWERTEC^{PRO}™

Southern Technologies LLC • Chicago • IL 60606