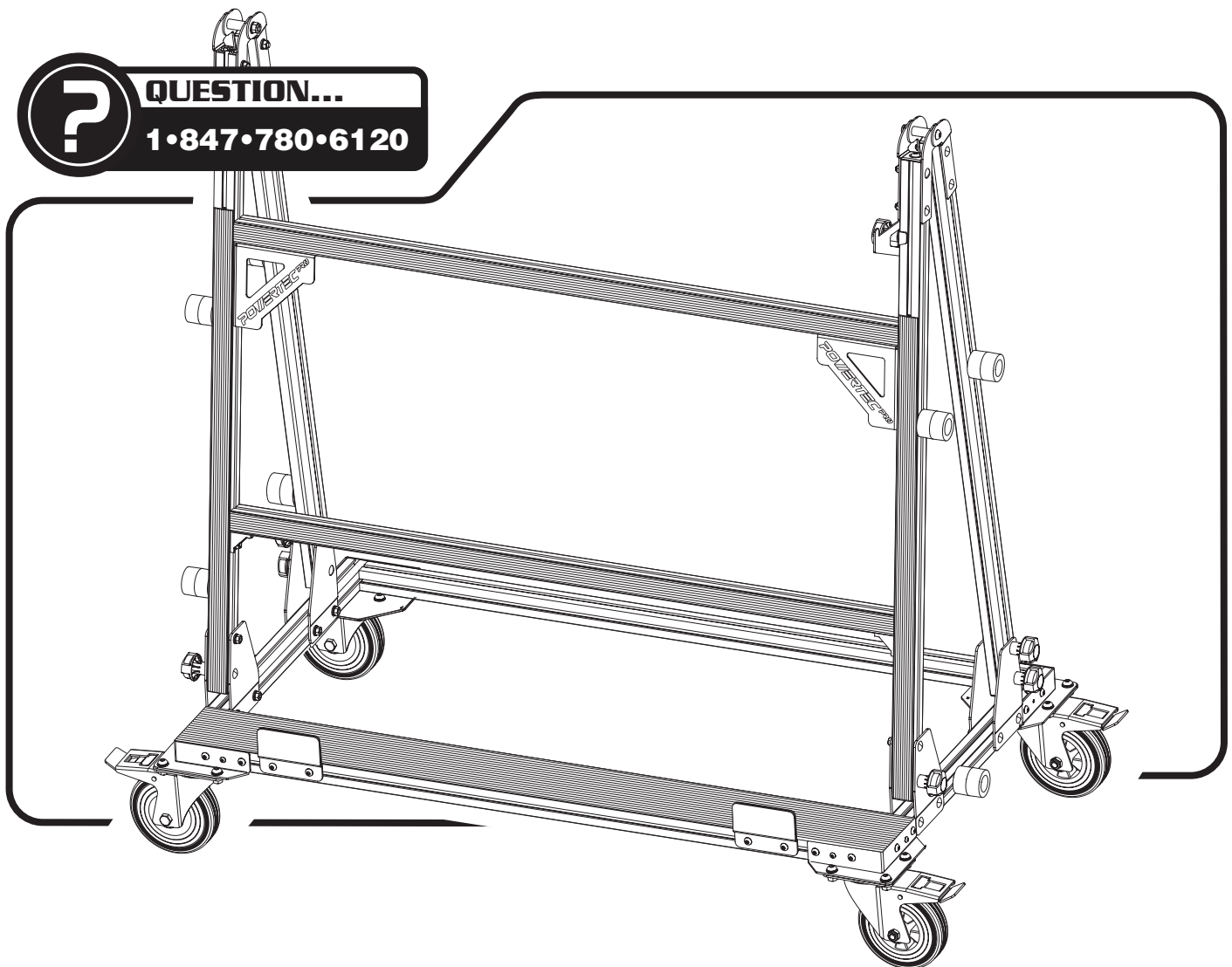


Owner's Manual

POWERTEC PRO™

Pro Transport Cart for large format tile & slab






Visit us on the web at www.powertecproducts.com



You will need this manual for safety instructions, operating procedures, and warranty. Put it and the original sales invoice in a safe, dry place for future reference.

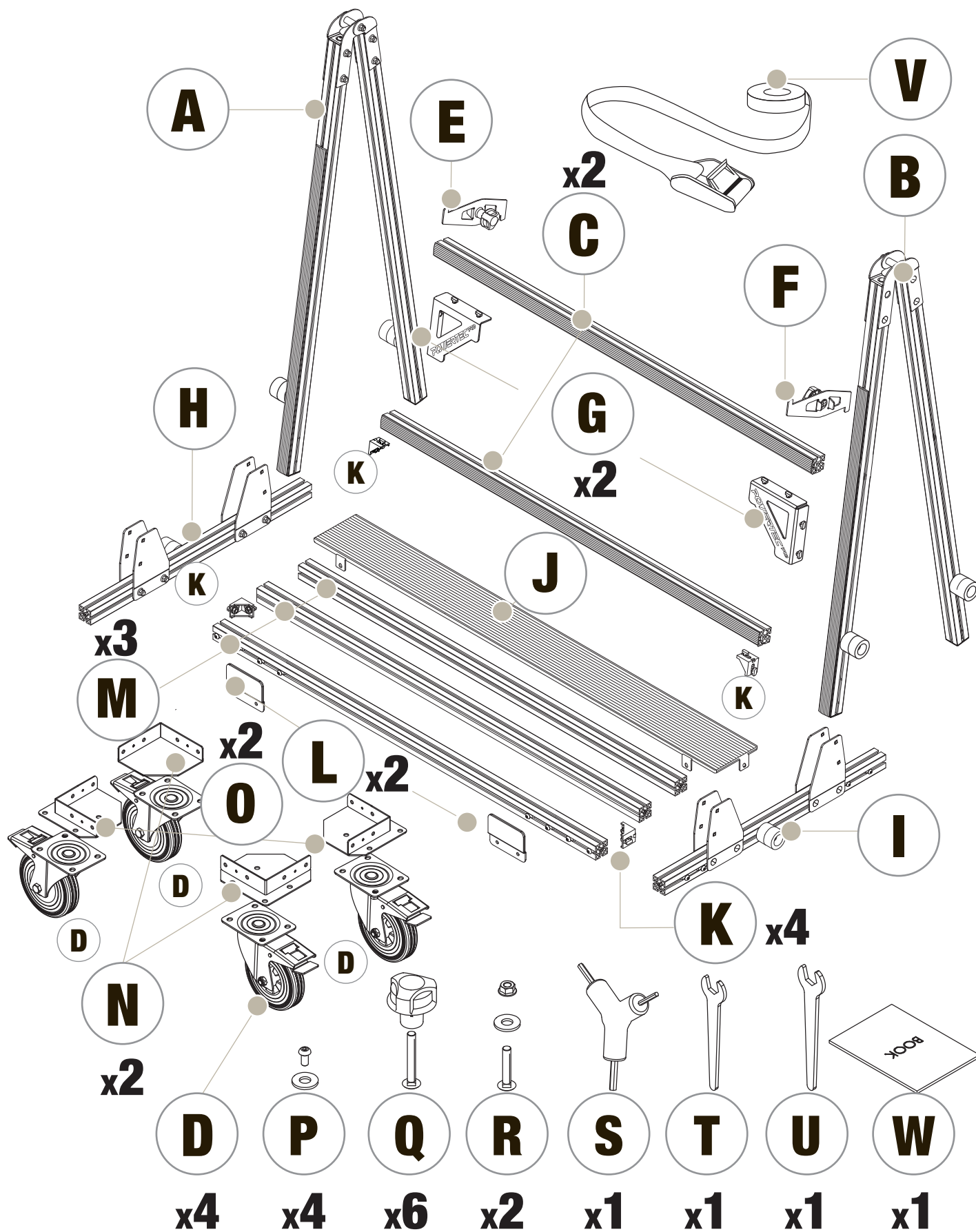
TABLE OF CONTENTS

SECTION PAGE

	ASSEMBLY	1
	PARTS ILLUSTRATION & LIST	12-13
	WARRANTY	14

PRODUCT SPECIFICATIONS

Load Capacity
770 lbs (350 kg) or 250lbs(116 kg)
Maximum Handling Format:
118.1” x 65.35” (300 x 166cm)

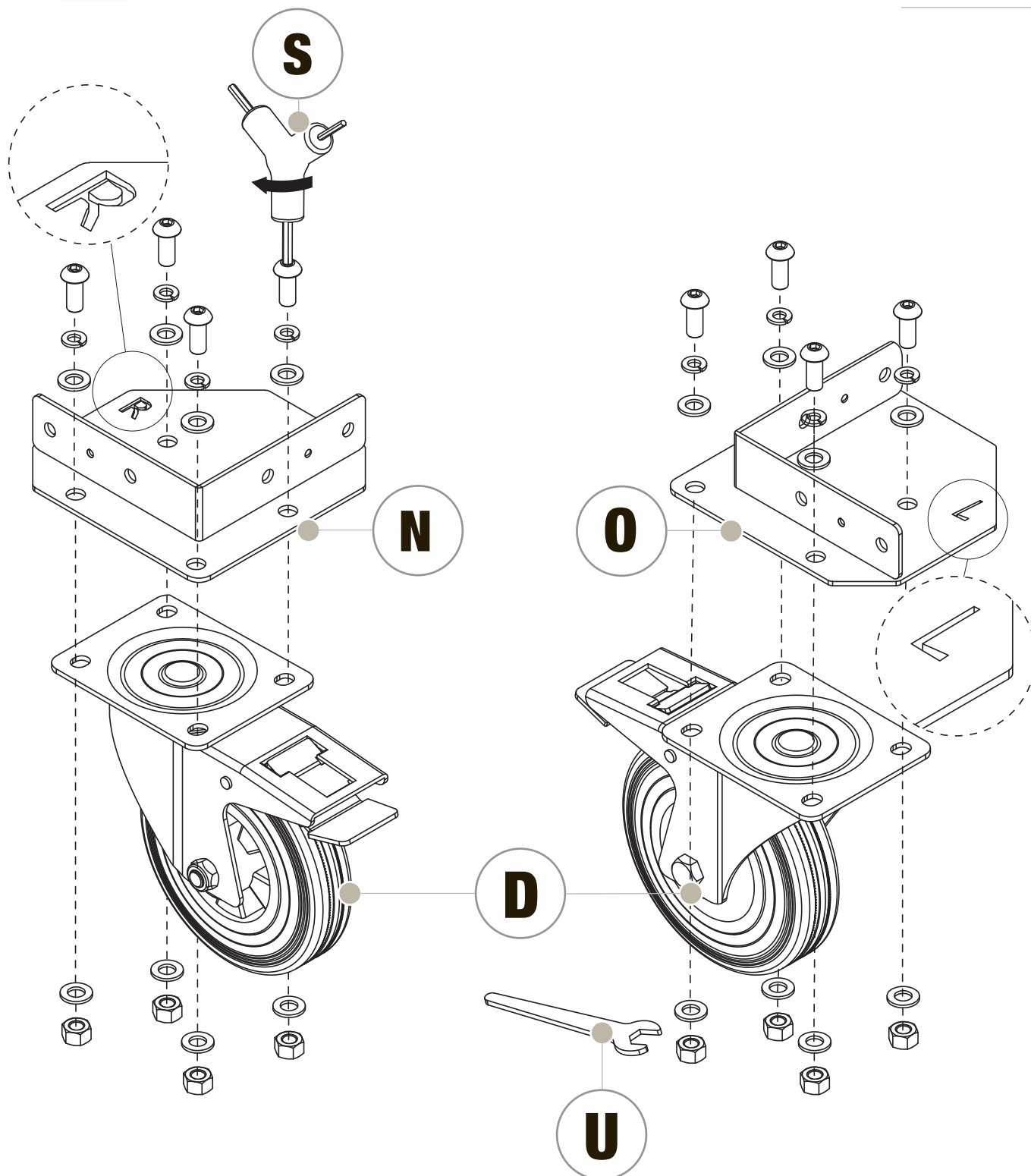


1

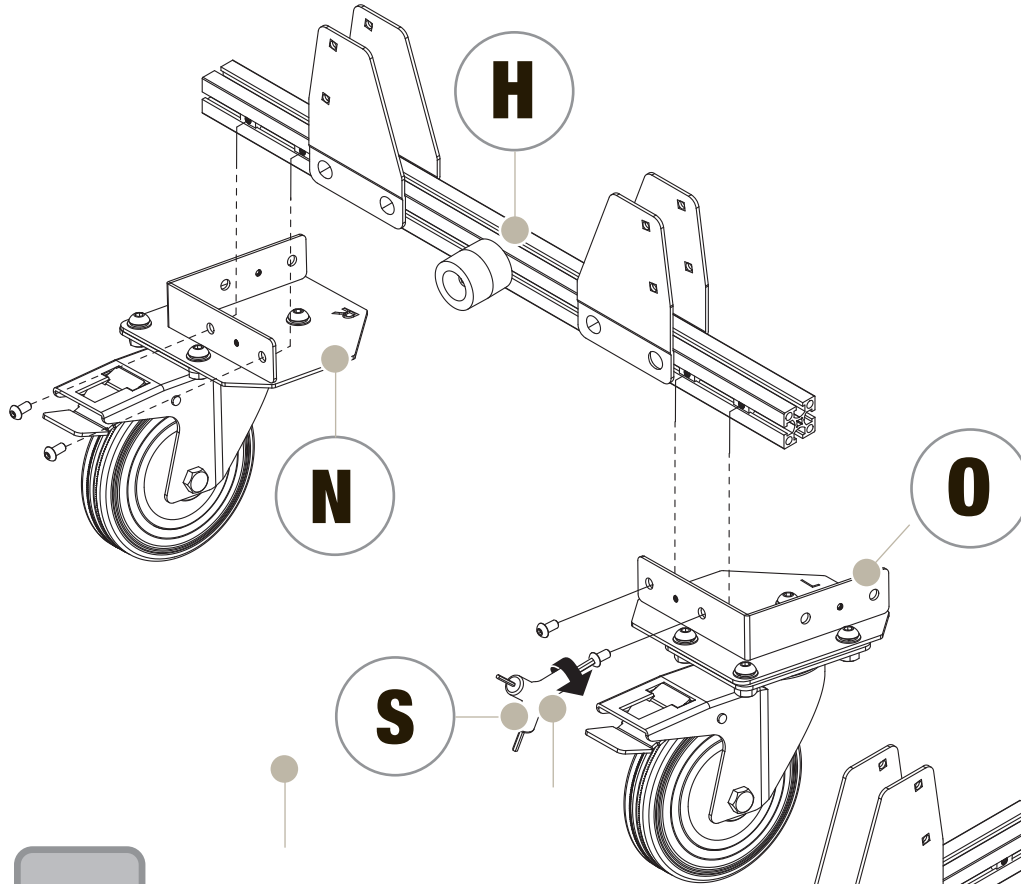
D X4

N x2

O x2

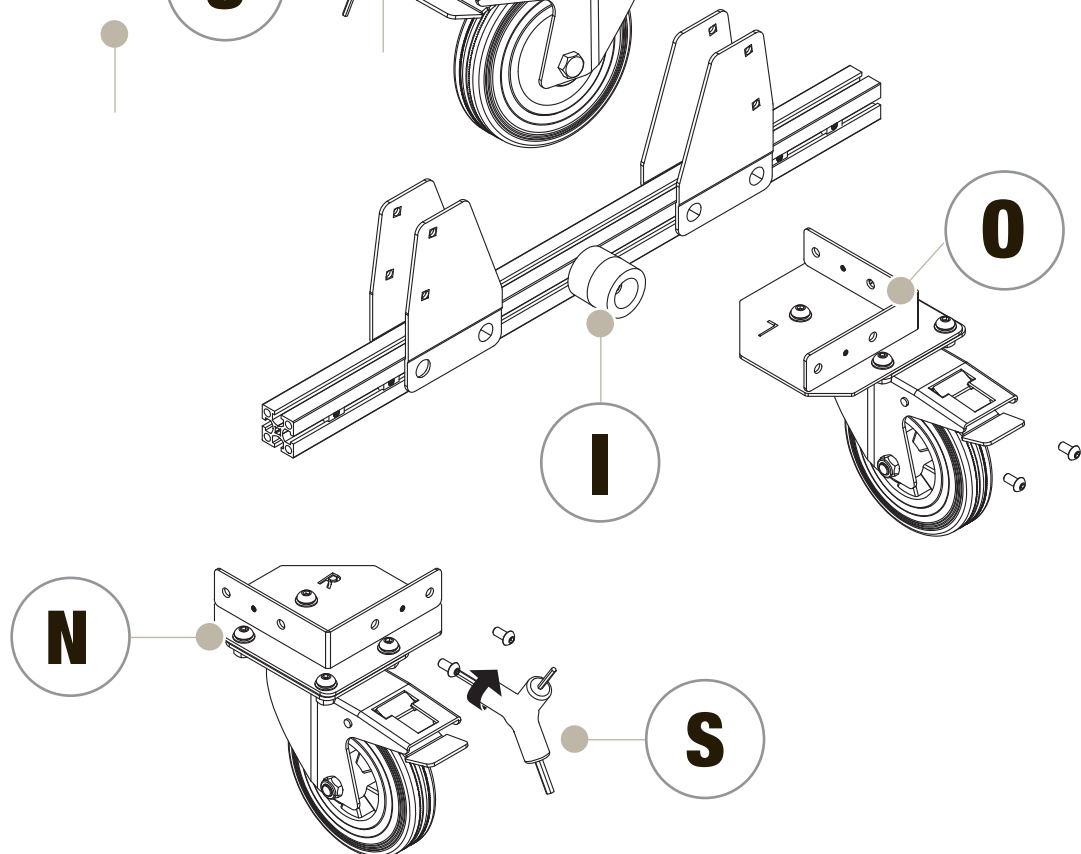


2



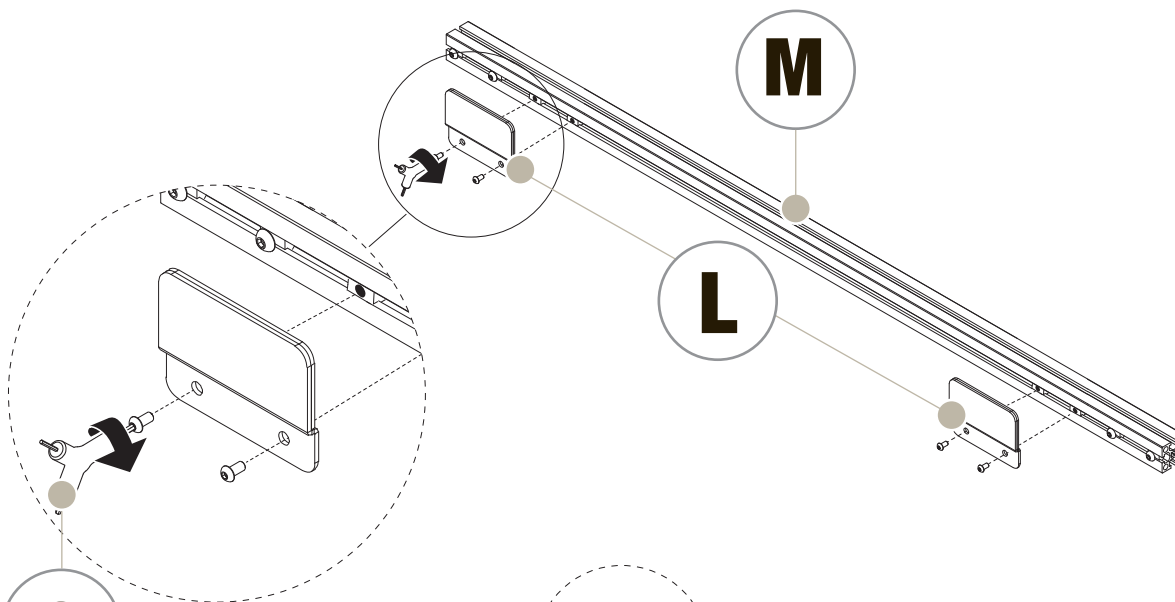
D	X4
N	x2
O	x2
H	x1
I	x1

3



4

L	X2
M	x1



S

M

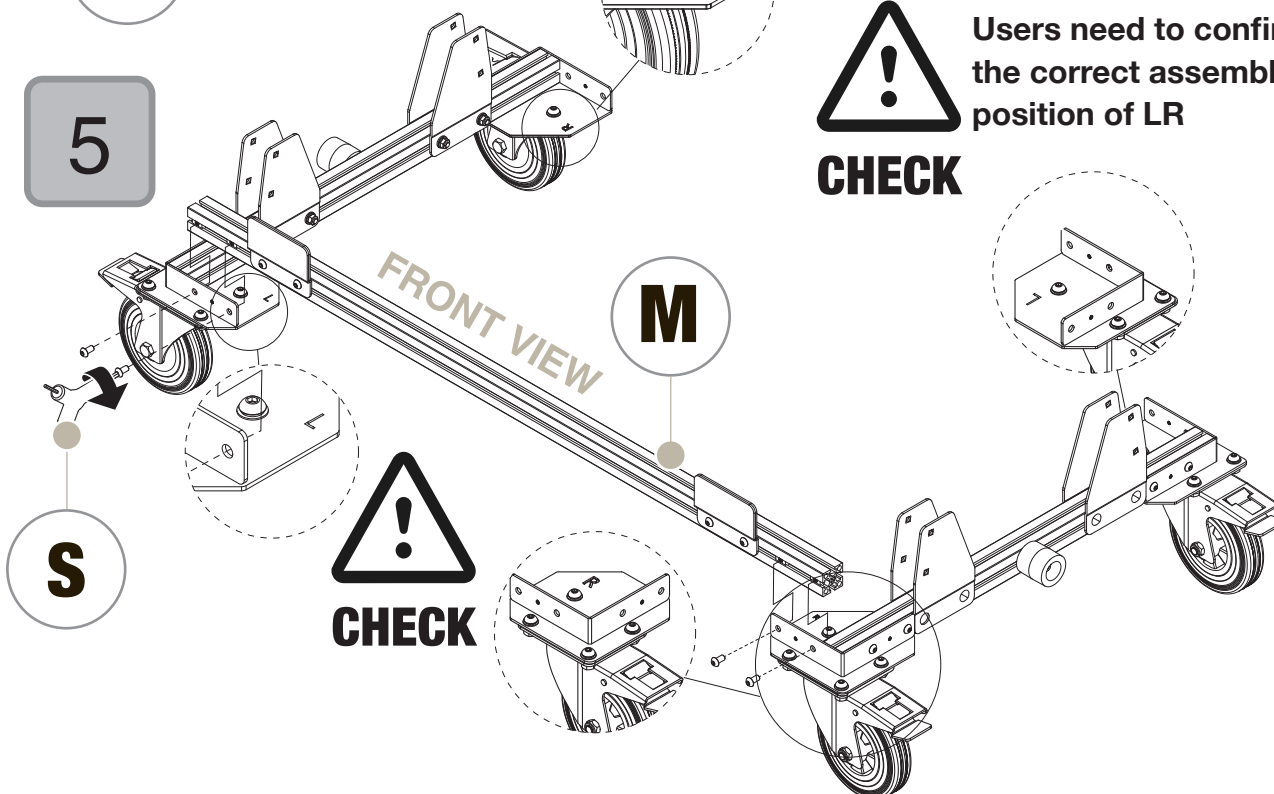
L

5



Users need to confirm the correct assembly position of LR

CHECK



S

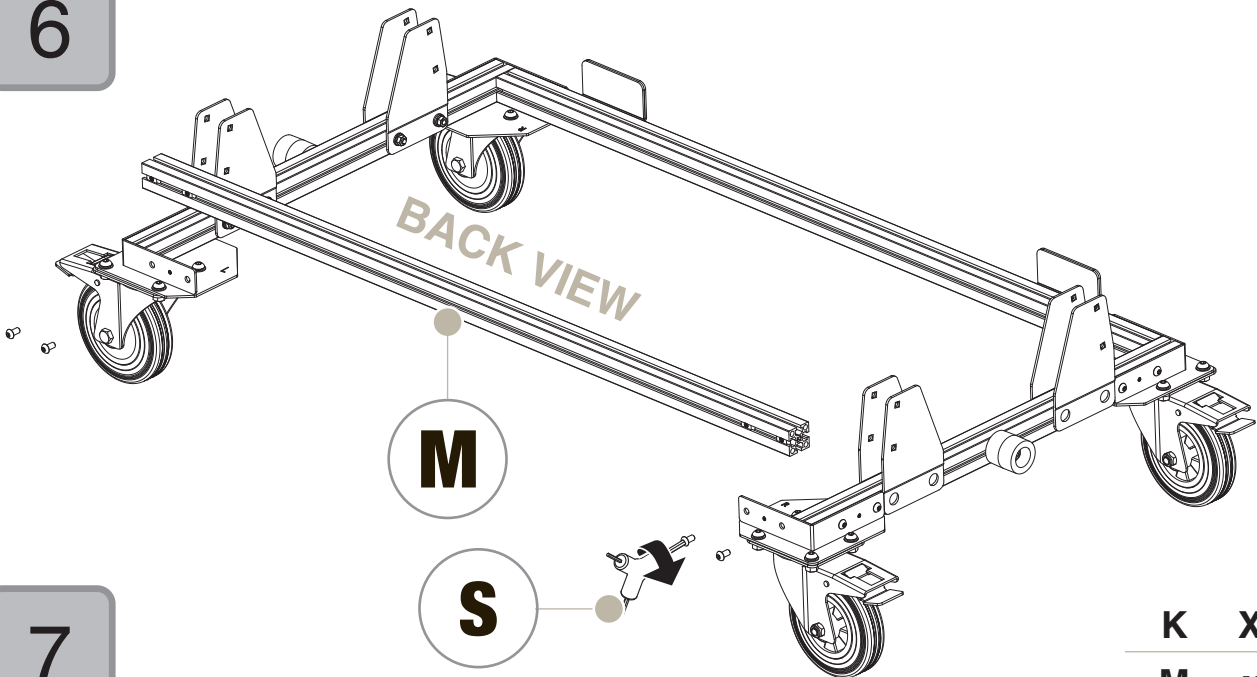
M



CHECK

6

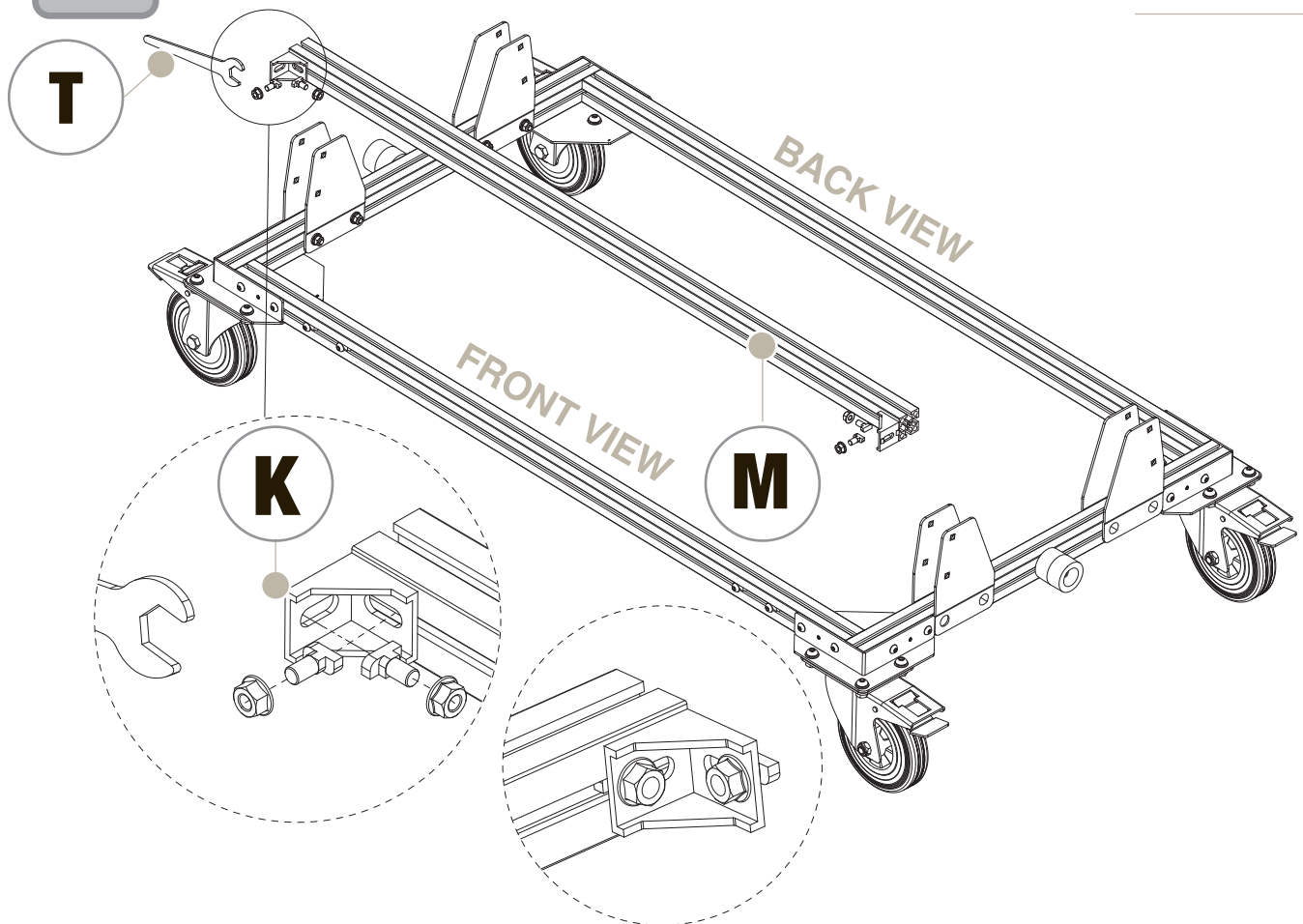
M x1



7

K X2

M x1





SET UP

8

A X1

J x1

P x4

Q x3

R x1

P

J

S

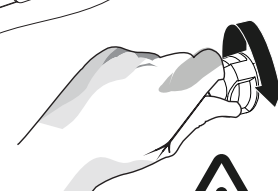
9

A

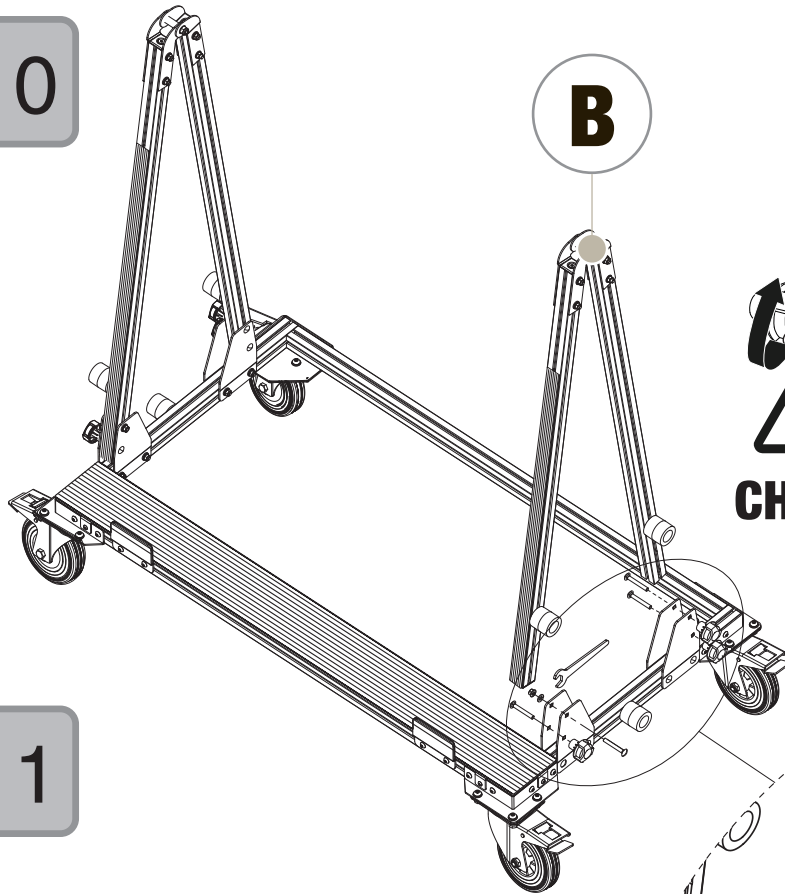
Q

U

R

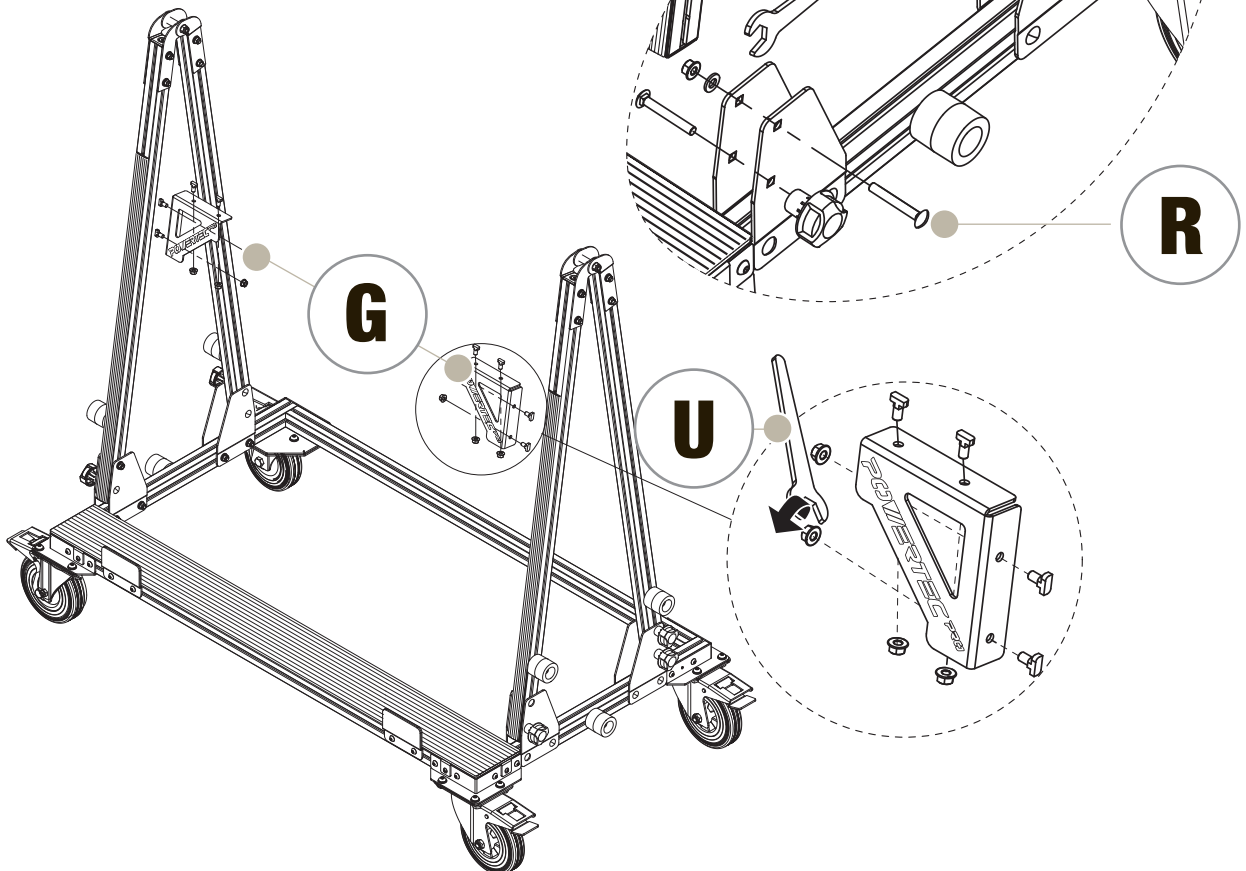


10



B	x1
G	x2
Q	x3
R	x1

11

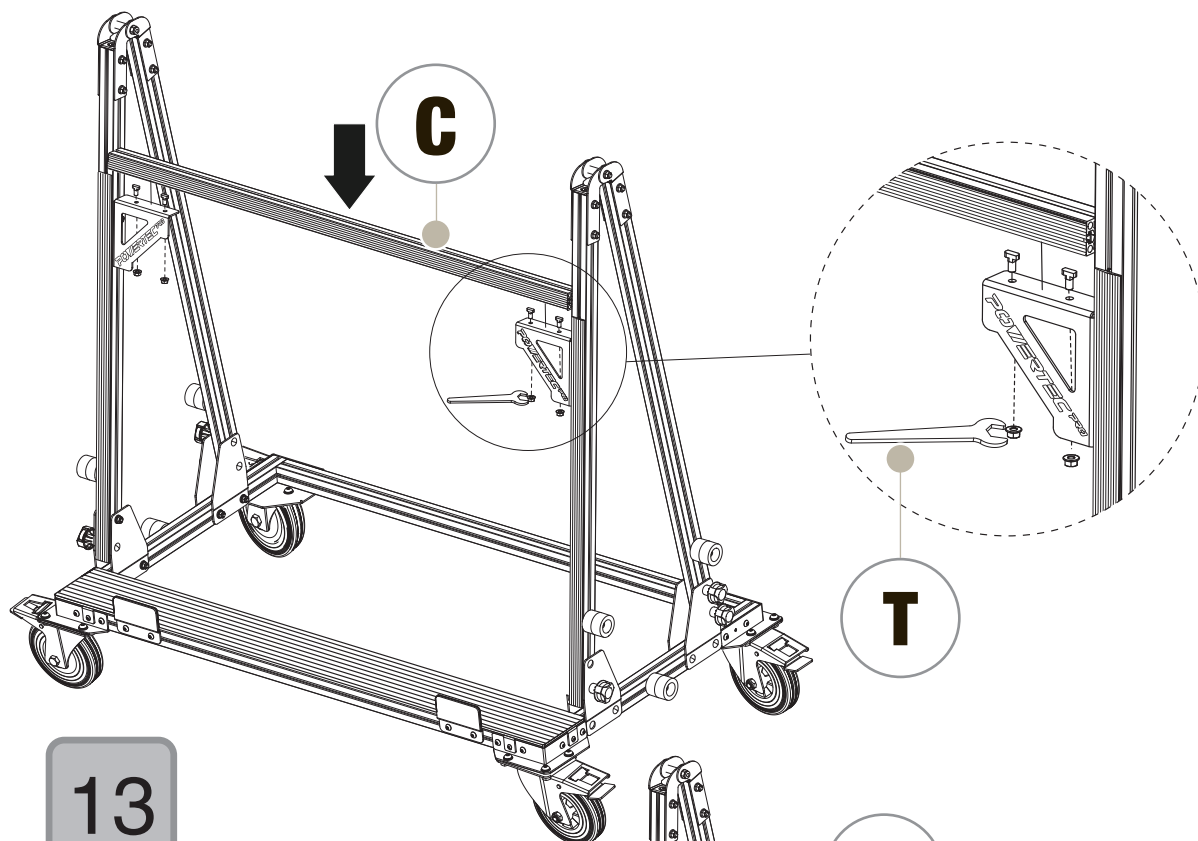




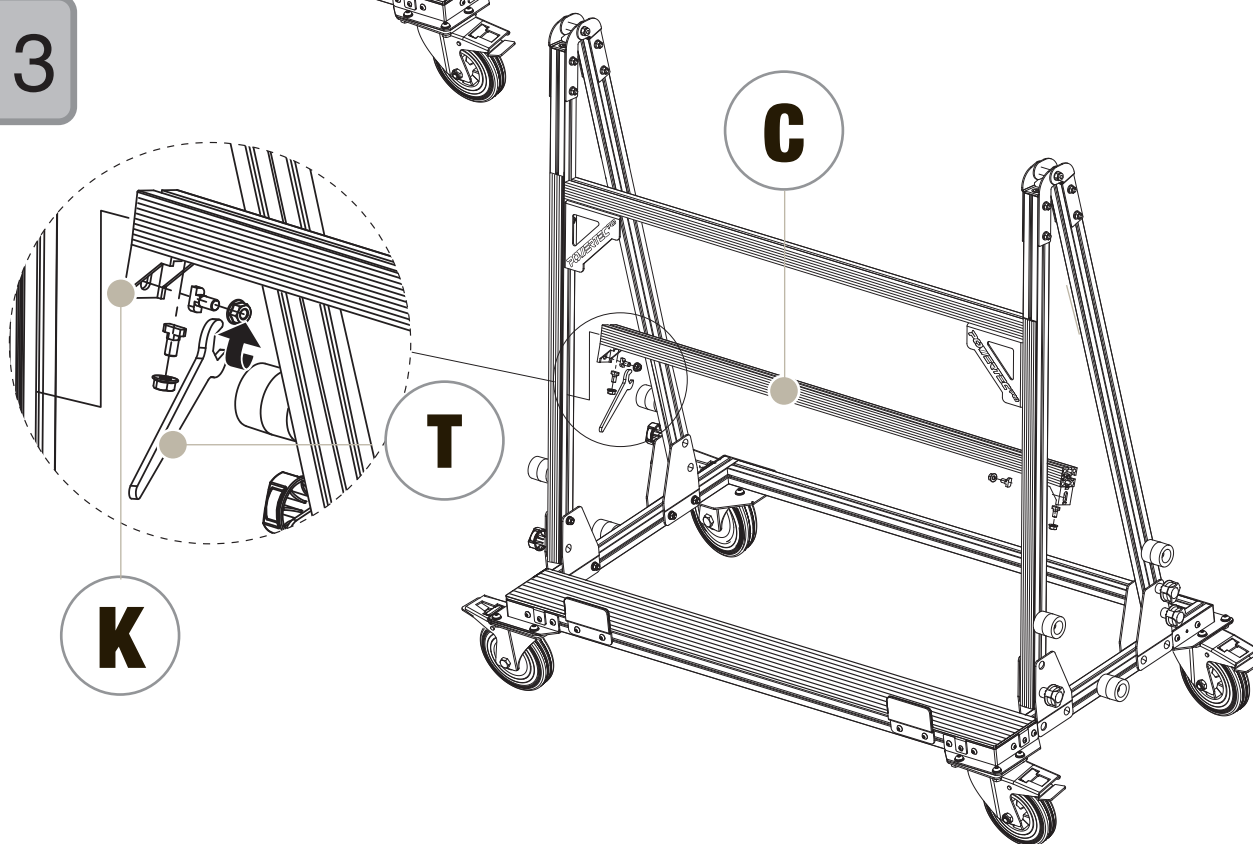
C X2

K x2

12



13

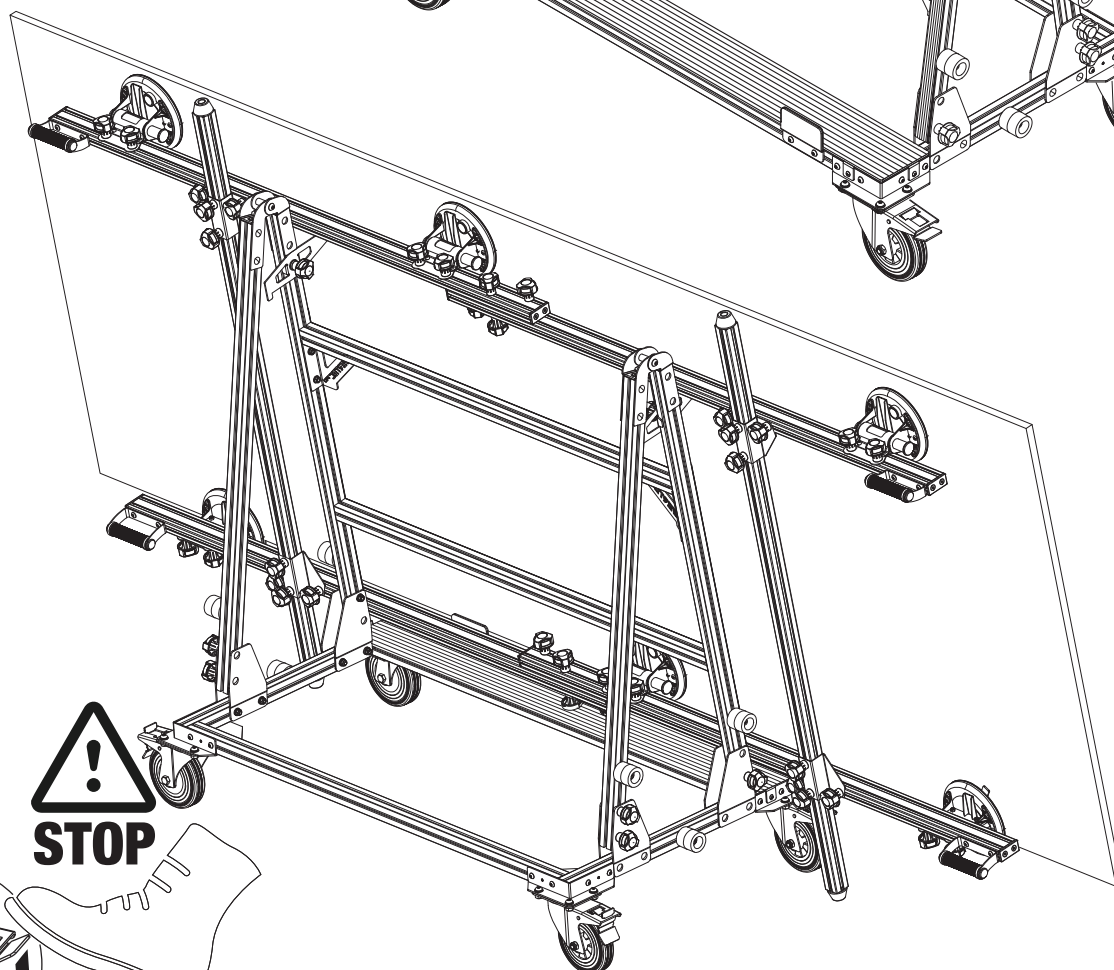
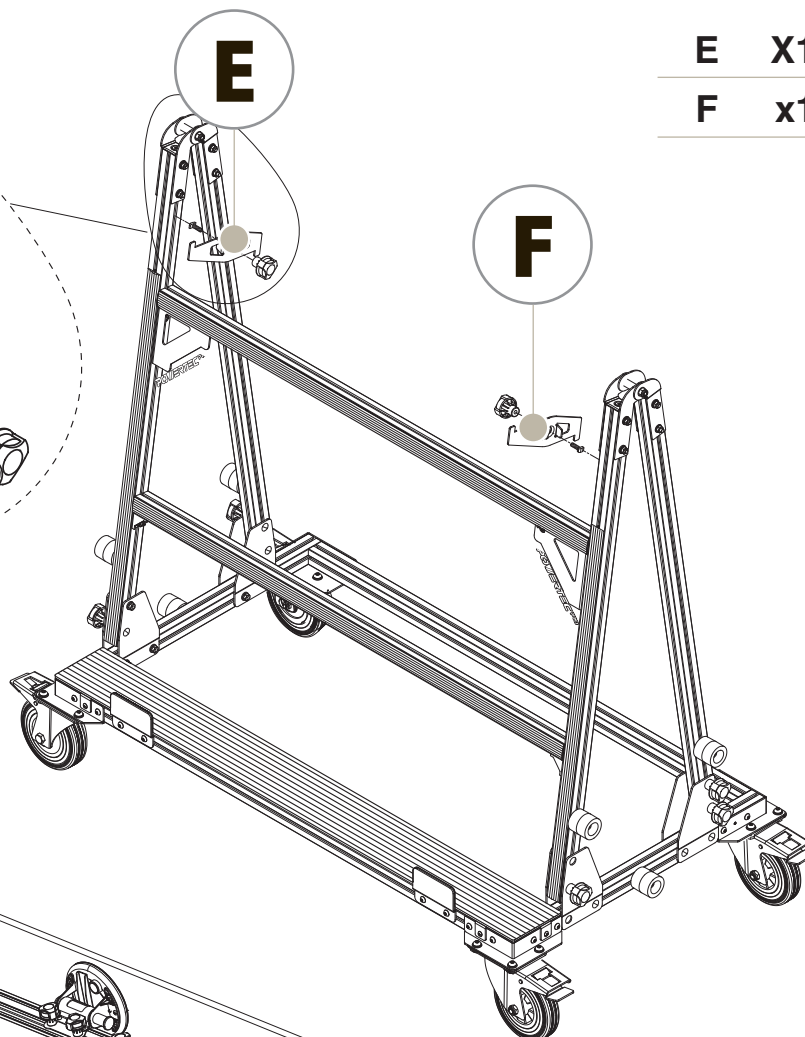


14

E	X1
F	x1



CHECK



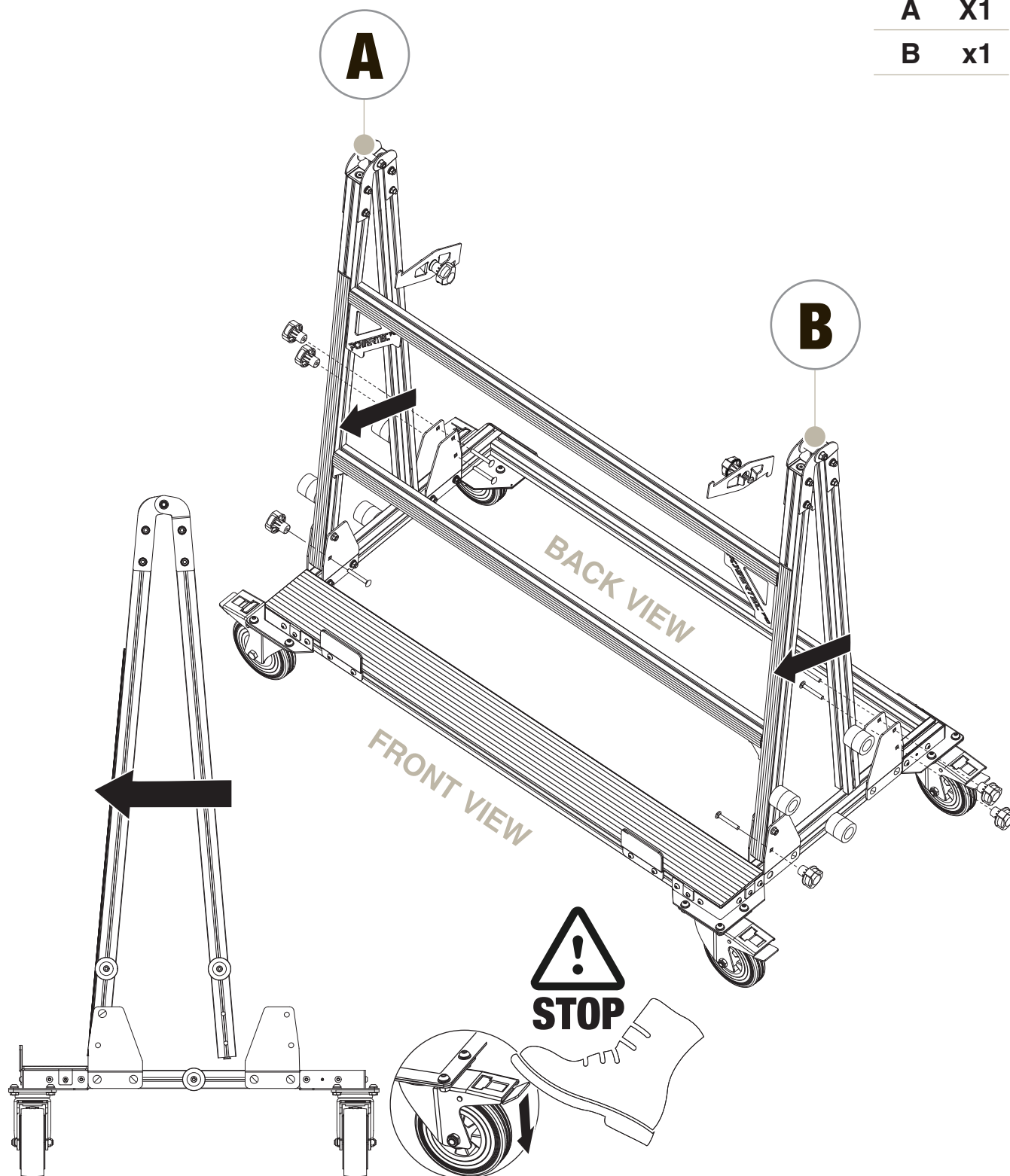
STOP



Folding Function - 1

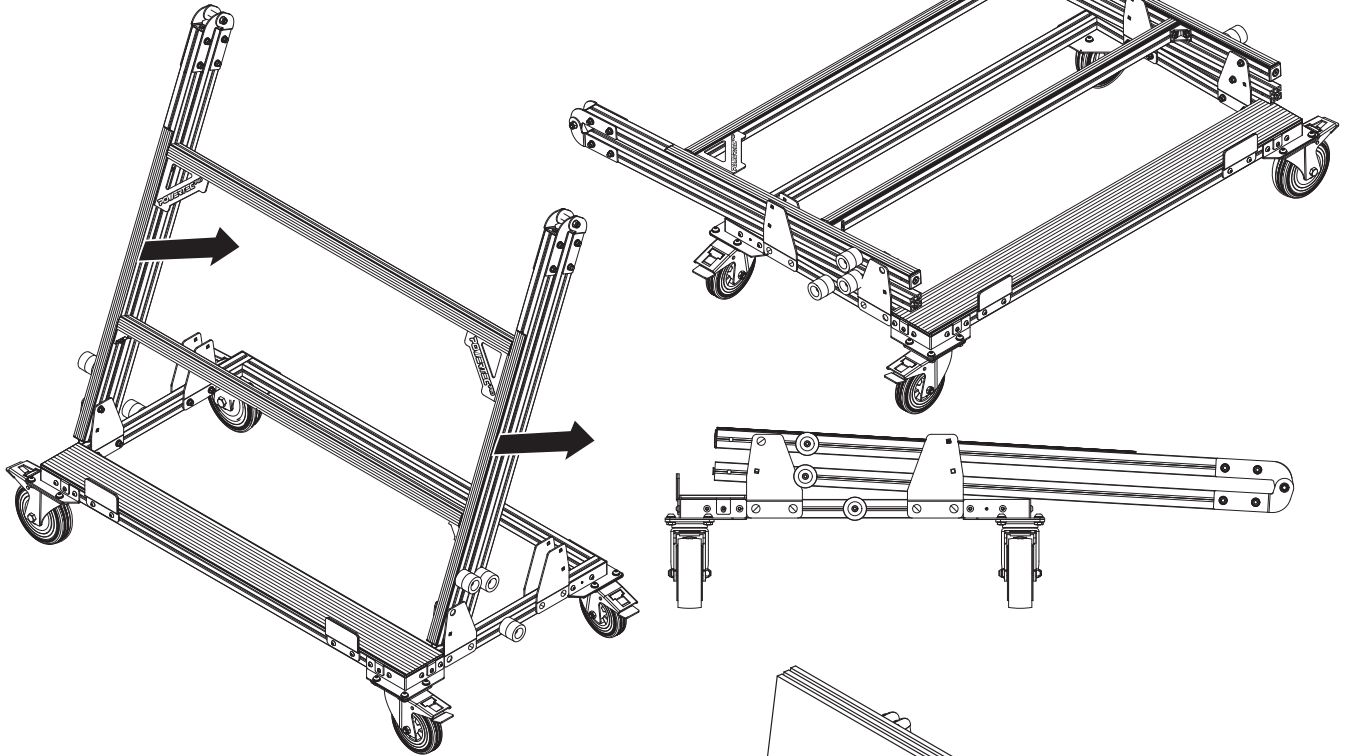
Remove 6 carriage bolts and knobs from the connecting plates. Push the 2 rear bars forward, and then fold the A-frame.

A	X1
B	x1



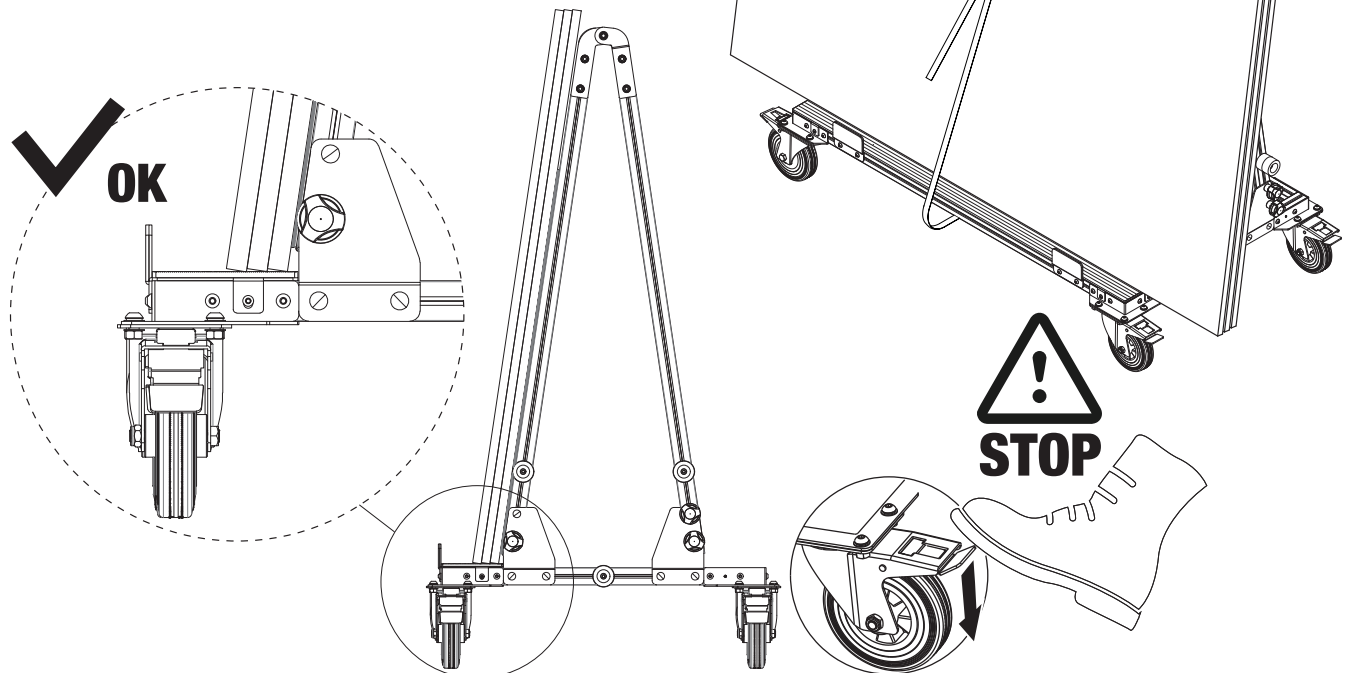
Folding Function - 2

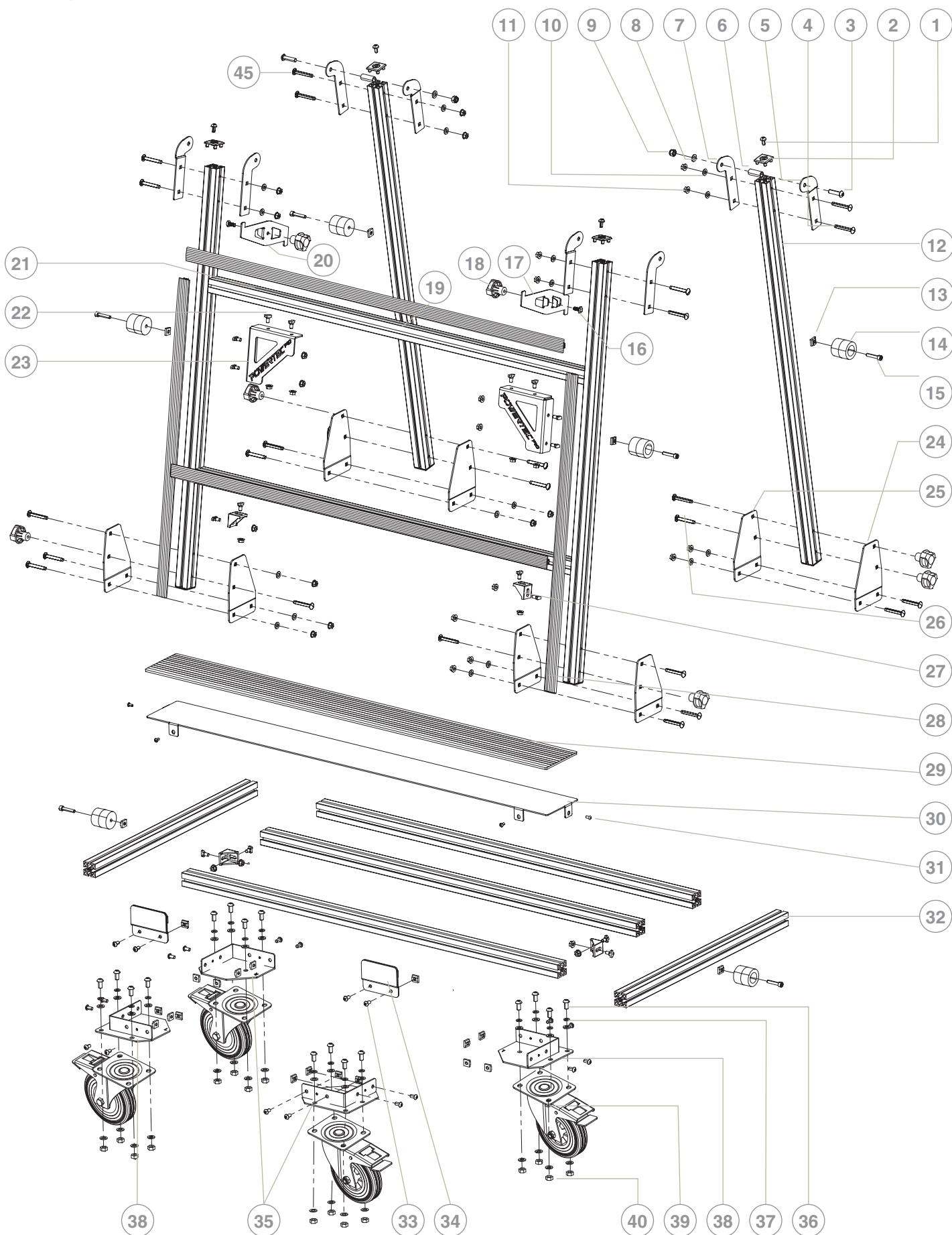
Place the folded A-frame flat on the base.



INSTRUCTIONS FOR USE:

LARGE FORMAT TILE TRANSPORT





WORK TABLE PARTS LIST



Key#	Part#	Description	Specifications	Qty	Key#	Part#	Description	Specifications	Qty
1	71983001	Socket head cap screw	M8-12	8	27	71983027	Corner joint		4
2	71983002	End cap		8	28	71983028	Bumper strip B		2
3	71983003	Half round head hexagon socket screws	M10-65	2	29	71983029	Anti-slip pad		1
4	71983004	Square neck round head screw	M8-60	2	30	71983030	Support base		1
5	71983005	Connecting plate A		4	31	71983031	Half round head hexagon socket screws	M6-12	4
6	71983006	Spacer		2	32	71983032	Connecting rod C		2
7	71983007	Connecting plate B		4	33	71983033	Half round head hexagon socket screws	M8-16	20
8	71983008	Thin Flat washer	$\phi 10 \times \phi 20$, T=1	34	34	71983034	Limiting plate		2
9	71983009	Nylon nut	M10	2	35	71983035	Caster mounting bracket R		2
10	71983010	Flat washer	$\phi 8 \times \phi 18$	18	36	71983036	Half round head hexagon socket screws	M10-20	16
11	71983011	Toothed flange nut	M8	34	37	71983037	Spring washer	M10	16
12	71983012	Connecting rod A		4	38	71983038	Caster mounting bracket L		2
13	71983013	Slide block nut	M8	26	39	71983039	Swivel caster		4
14	71983014	Bumper pad		6	40	71983040	Hex nut	M10, T=8	16
15	71983015	Socket head cap screw	M8-40	6	41	71983041	Hex Wrench	4 / 5 / 6x 90	1
16	71983016	T-shaped screw	M8x25	2	42	71983042	Open wrench	13	1
17	71983017	Hook A		1	43	71983043	Open wrench	17	1
18	71983018	Knob nut		8	44	71983044	Strap belt	4M	1
19	71983019	Bumper strip A		2	45	71983045	Square neck round head screw	M8-55	16
20	71983020	Hook B		1					
21	71983021	Connecting rod B		5					
22	71983022	T-shaped screw	M8x16	16					
23	71983023	Corner bracket		2					
24	71983024	Connecting plate C		4					
25	71983025	Connecting plate D		4					
26	71983026	Square neck round head screw	M8-65	6					



WARRANTY

Thank you for investing in a **POWERTEC Pro™** power tool. This product has been designed and manufactured to meet high quality standards and is guaranteed for domestic use against defects in workmanship or material for a period of 12 months from the date of purchase. This guarantee does not affect your statutory rights.

SOUTHERN TECHNOLOGIES LLC. BENCH TOP AND STATIONARY POWER TOOL LIMITED 1 YEAR WARRANTY AND 30-DAY SATISFACTION GUARANTEE POLICY

POWERTEC Pro products are designed and manufactured by **Southern Technologies LLC**. All warranty communications should be directed to **Southern Technologies LLC** by calling 847-780-6120 (toll free), 9 AM to 5 PM, Monday through Friday, US Pacific Time.

30-DAY SATISFACTION GUARANTEE POLICY

During the first 30 days after the date of purchase, if you are dissatisfied with the performance of this **POWERTEC Pro** tool for any reason, you may return the tool to the retailer from which it was purchased for a full refund or exchange. You must present proof of purchase and return all original equipment packaged with the original product. The replacement tool will be covered by the limited warranty for the balance of the one year warranty period.

LIMITED ONE YEAR WARRANTY

This warranty covers all defects in workmanship or materials in this **POWERTEC Pro** tool for a one year period from the date of purchase. This warranty is specific to this tool. **Southern Technologies, LLC** reserves the right to repair or replace the defective tool, at its discretion.

HOW TO OBTAIN SERVICE

To obtain service for this **POWERTEC Pro** tool you must return it, freight prepaid, to **POWERTEC Pro**. You may call (toll free) 847-780-6120 for more information. When requesting warranty service, you must present the proof of purchase documentation, which includes a date of purchase. **POWERTEC Pro** will either repair or replace any defective part, at our option at no charge to you. The repaired or replacement unit will be covered by the same limited warranty for the balance of one year warranty period.

WHAT IS NOT COVERED

This warranty applies to the original purchaser at retailer and may not be transferred.

This warranty does not cover consumable items such as saw blades, knives, belts, discs, cooling blocks and sleeves. This warranty does not cover required service and part replacement resulting from normal wear and tear, including accessory wear.

This warranty does not cover any malfunction, failure or defect resulting from:

- 1) misuse, abuse, neglect and mishandling not in accordance with the owner's manual.
- 2) damage due to accidents, natural disasters, power outage, or power overload.
- 3) commercial or rental use.
- 4) alteration, modification or repair performed by persons not recommended by **POWERTEC Pro**.

DISCLAIMER

To the extent permitted by applicable law, all implied warranties, including warranties of MERCHANTABILITY or FITNESS FOR A PARTICULAR PURPOSE, are disclaimed. Any implied warranties, that cannot be disclaimed under state law are limited to one year from the date of purchase. **Southern Technologies LLC** is not responsible for direct, indirect, incidental or consequential damages. Some states do not allow limitations on how long an implied warranty lasts and/or do not allow the exclusion or limitation of incidental or consequential damages, so the above limitations may not apply to you. This warranty gives you specific legal rights, and you may also have other rights which vary from state to state. Southern Technologies LLC, makes no warranties, representations, or promises as to the quality or performance of its power tools other than those specifically stated in this warranty.

POWERTEC PRO™

Southern Technologies, LLC
Chicago, IL 60606