

**QUESTION...****1-847-780-6120**Visit us on the web at **powertecproducts.com**

Put these instructions and the original sales invoice in a safe, dry place for future reference.

Southern Technologies, LLC
Chicago, IL 60606**IMPORTANT SAFETY INSTRUCTIONS**

This system is designed to be used with a dust collector with at least 100 CFM. Always follow basic safety precautions including the following.

WARNING

For your own safety, read and understand all warnings and operating instructions before using any tool or equipment.

WARNING

Some dust created by operation of power tool contains chemicals known to the State of California to cause cancer, birth defects or other reproductive harm. To reduce your exposure to these chemicals, work in a well ventilated area and work with approved safety equipment. Always wear OSHA/NIOSH approved, properly fitting face mask or respirator when using such tools.

WARNING

Failure to follow these rules may result in serious personal injury. Remember that being careless for even a fraction of a second can result in severe personal injury.

WARNING

- Read, understand and follow the owner's manual and all labels on the tools, dust collector and this dust collection network before operating. Use ONLY as described in the manuals. To avoid personal injury or damage to dust collector use only recommended attachments.
- Wear eye protection. Always use safety glasses. Eye protection equipment should comply with ANSI Z87.1 standards.
- To reduce the risk of fire or explosion:
 - Do not pick up anything that is burning or smoking, such as cigarettes, matches, or hot ashes.
 - Do not use to vacuum combustible explosive materials, such as coal, grain, or other finely divided combustible material.
 - Do not use to vacuum hazardous, toxic or carcinogenic materials, such as asbestos or pesticide.
 - Never pick up explosive liquids (e.g. gasoline, diesel fuel, heating oil, paint thinner, etc.), acids or solvents.
 - Empty dust collector canister often.

CAUTION

Think safety! Safety is a combination of operator common sense and alertness at all times when tool is being used.

WARNING

Do not attempt to operate tool until it is completely assembled according to the instructions.

WARNING

Metal shavings or dust can set sawdust on fire. Collect wood materials only. Do not collect metal shavings or dust with anything that has metal in it. Disconnect dust collector system from any tool before working on metals. Remove all traces of wood dust from inside that tool's dust traps. Remove all traces of metal shavings or dust before reconnecting the vacuum/dust collector.

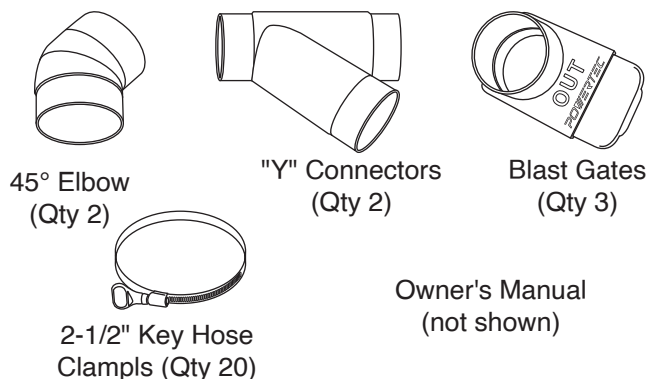
CAUTION

If using this Dust Collection Kit to help keep airborne wood dust in heavy usage within acceptable limits, you must regularly monitor airborne dust and maintain the Dust Collection Network to avoid exceeding dust limits. Each application is unique. The maintenance schedule must be for the specific Dust Collection Network being used.

IMPORTANT: Always ensure the dust collection network is properly grounded. If in doubt, contact an electrician.

SAVE ALL WARNINGS AND INSTRUCTIONS FOR FUTURE REFERENCE**UNPACKING****Refer to Figure 1**

- Examine shipping carton for freight damage before opening. If shipping carton is damaged file a claim with the carrier immediately.
- Carefully remove all contents from shipping carton. The shipping carton contains:

Figure 1

NOTE: Contact the customer service center if any of these parts are missing.

NOTE: After unit is assembled dispose of all packaging material in an environmentally safe way.

INSTALLATION

Refer to Figure 1 to 5

TOOLS NEEDED

- No tools are required

IMPORTANT: Although the individual fittings can be used with different types of piping and hoses, this kit is designed to work with 2-1/2" flexible dust collection hose. Additional fittings and adapters, specific to your application, will be required. **NOTE:** Additional tools will be needed if using the hose hangers (not included).

- Connect a 2-1/2" dust collection hose (not included) from the blast gate to the tool.
- Assemble the "Y" connectors as shown in Figure 2 with the air flow going toward the dust collector . Figure 3 shows the incorrect way to assemble the "Y" connectors.

Figure 2

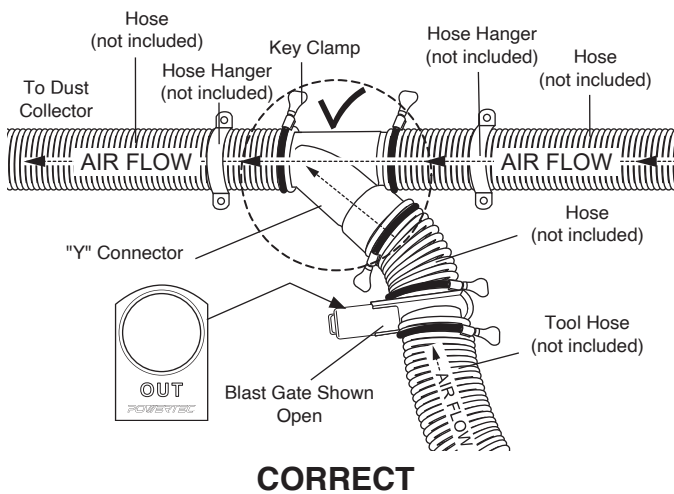
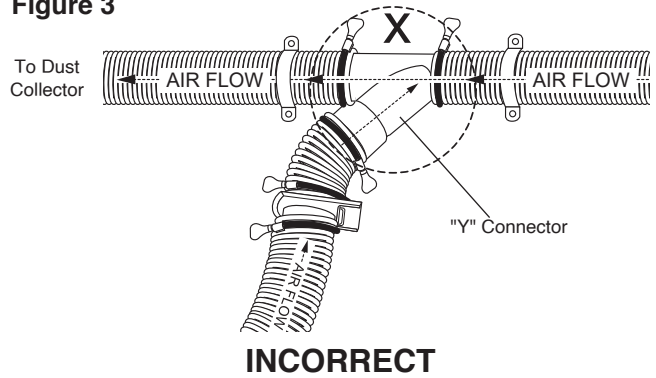


Figure 3



- Always assemble the blast gates at the "Y" connectors. **IMPORTANT:** The OUT on the blast gate MUST be oriented toward the "Y" connector.
- Secure the hose connections with the key clamps.
- Figure 5 is an example of the dust collection network assembled.
- Joints and planers should be positioned the closest to the dust collector for best performance.
- Assemble the dust collector connector to the dust collection network and then to the dust collection hose of a dust collector . **NOTE:** the dust collector must have at least 100 CFM.
- For best performance of the network close all of the blast gates except for the one attached to the tool being used. Figure 4 shows the the blast gates in the Open and Closed positions.

Figure 4

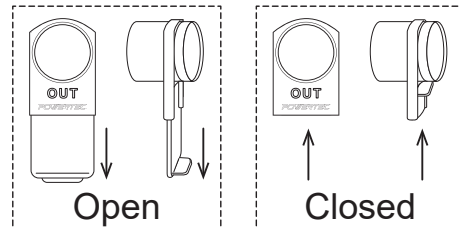


Figure 5

