

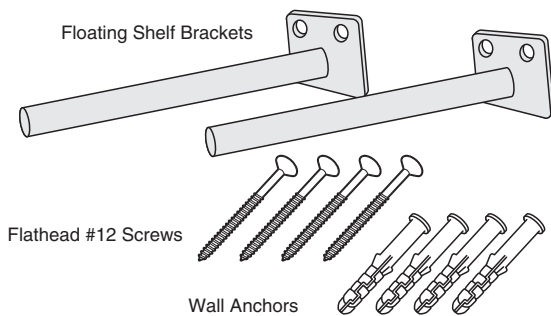
**Solid Steel Floating Shelf Brackets**



**PACKAGING CONTENTS**

- 2– Floating Shelf Brackets (15/32" x 6")
- 4– Flathead #12 Screws (2" long)
- 4– Wall Anchors (1-1/4" long)

Figure 1



**TOOLS NEEDED**

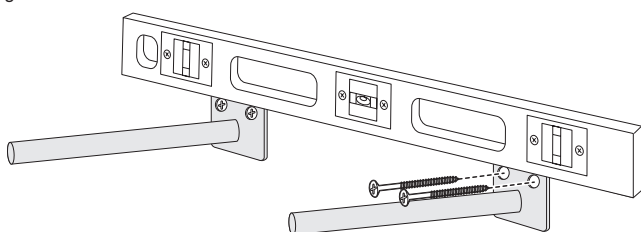
- Stud Finder
- Drill
- 3/16" Drill Bit
- Extra-Long 1/2" Drill Bit
- Level
- Pencil

IMPORTANT: Weight limit is 55 lbs.

**TO MOUNT THE SHELF BRACKETS**

1. Use a stud finder to locate the studs in your wall where the shelf brackets will be mounted. If a stud is NOT found in the wall, the provided wall anchors MUST be used.
2. Hold one shelf bracket (with the mounting holes oriented as shown) at the desired mounting location on the wall and use a level to ensure it is level. While holding the shelf bracket in place, mark the hole positions.

Figure 2



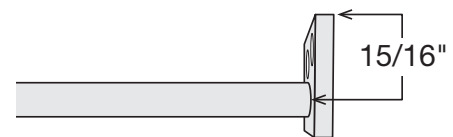
3. Use a 3/16" drill bit to drill the holes. If the wall anchors are needed, insert them into the drilled holes now.
4. Place the bracket into position on the wall, align the holes with the holes in the bracket, and secure in place with the provided screws.
5. Position the second shelf bracket in place and make sure the two shelf brackets are level. Repeat steps 1–4 to mount the second shelf bracket.

**TO ATTACH THE SHELF**

**NOTE:** Holes will need to be drilled into the shelf (sold separately).

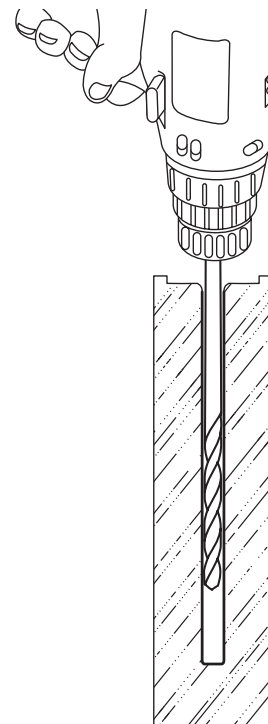
1. Place the shelf onto the shelf brackets in the desired location. On the side of the shelf facing the wall, mark both sides of the shelf bracket rods.
2. Remove the shelf. Measure and mark the center between the two markings (on both sides). **NOTE:** The bracket rod is not in the center of the bracket, see Figure 3. Please account for this when determining the position of the hole.

Figure 3



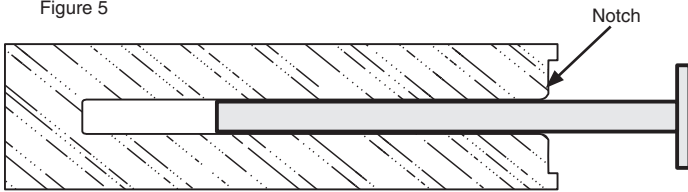
3. Use an extra-long 1/2" drill bit to drill the holes where required. Make sure to drill as straight as possible.

Figure 4



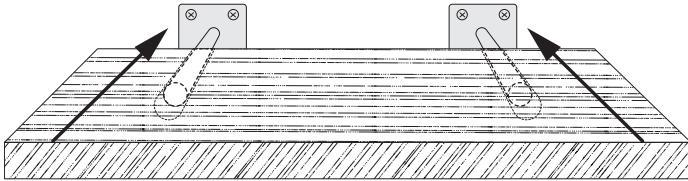
**NOTE:** If you would like the shelf to fit flush to the shelf bracket, cut a notch 2" x 1-1/2" and 3/16" deep.

Figure 5



4. Align the shelf's drilled holes with the shelf brackets and slide into place.

Figure 6



Visit us on the web at [www.powertecproducts.com](http://www.powertecproducts.com)



Put these instructions and the original sales invoice in a safe, dry place for future reference.

Southern Technologies, LLC  
Waukegan, IL 60087