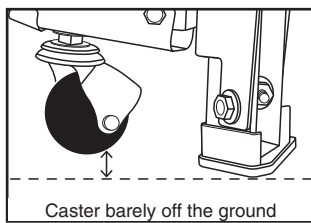
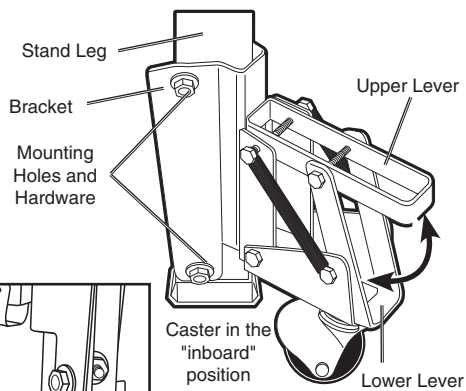


RETRACTABLE CASTER KIT (4 PACK)



ASSEMBLY

- Make sure the stand is sitting on a flat stable surface.
NOTE: Fits most open steel stands with angled legs.
- Make sure the caster assembly is in the retracted position, then place it on the outside of the leg and all the way to the ground.
- Rotate the caster to the inboard position (or closest to the leg) and slide the bracket assembly up until the caster is barely off the ground.
- Clamp the caster assembly in position.
- Each bracket has four mounting holes, if these holes do not line up with existing holes in the leg, mark the position and drill new ones to accommodate the 5/16" mounting bolts.
- Mount the caster assembly with the hardware supplied.



TO USE

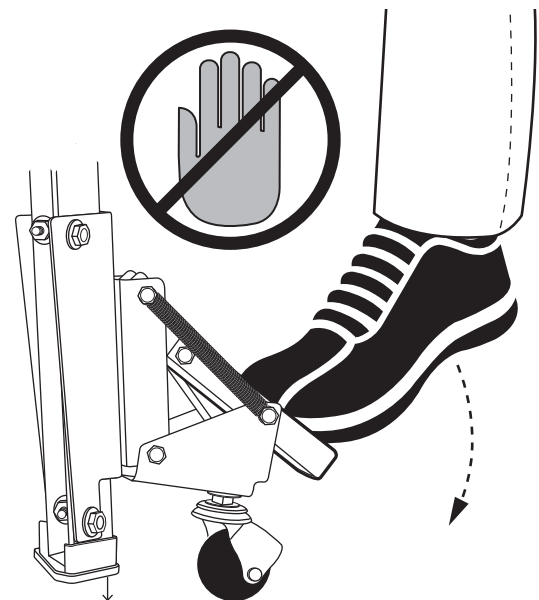


PINCH HAZARD! Always use feet to step on the upper and lower levers.

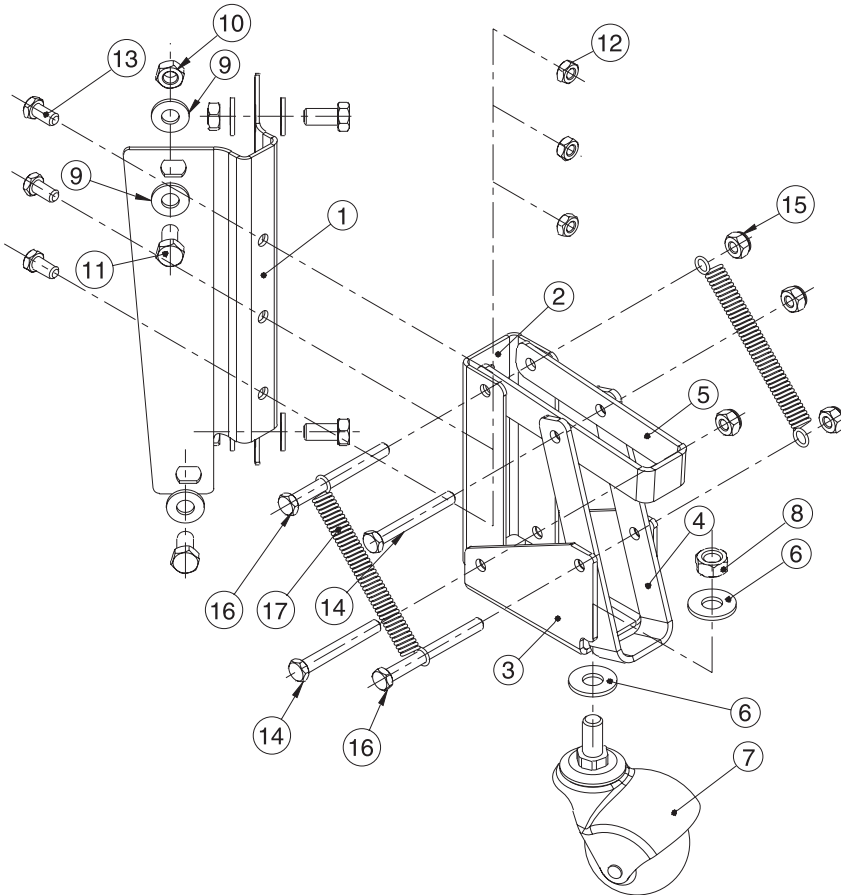
- Step on the extended upper lever and the caster assembly will extend and lift the legs off the ground allowing the stand to move.



- To retract, step on lower lever and the caster assembly will "snap" up, lowering the leg.



RETRACTABLE CASTER KIT ILLUSTRATION AND PARTS LIST



Key No.	Description	Qty.
1	Leg bracket	1
2	Mechanism bracket	1
3	Guide bracket	1
4	Lower lever	1
5	Upper lever	1
6	3/8" Washer	2
7	Caster	1
8	3/8" Nut	1
9	5/16" Washer	8
10	5/16" Nut	4
11	5/16" x 5/8" Bolt	4
12	1/4" Nut	3
13	1/4" x 1/2" Bolt	3
14	1/4" x 2" Bolt	2
15	1/4" Nylon Nut	4
16	1/4" x 2-1/2" Bolt	2
17	Spring	2

Visit us on the web at www.southerntechllc.com



Put these instructions and the original sales invoice in a safe, dry place for future reference.

Southern Technologies, LLC
3816 Hawthorn CT,
Waukegan, IL 60087